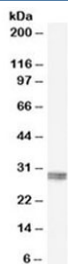


## CLIC4 Antibody (R34803)

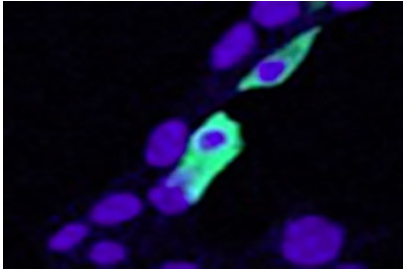
Catalog No.	Formulation	Size
R34803-100UG	0.5 mg/ml in 1X TBS, pH7.3, with 0.5% BSA (US sourced) and 0.02% sodium azide	100 ug

[Bulk quote request](#)

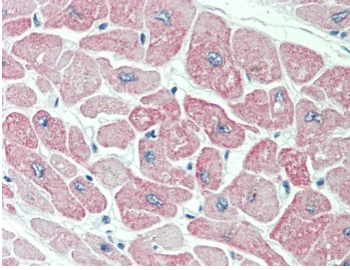
<b>Availability</b>	1-3 business days
<b>Species Reactivity</b>	Human, Mouse
<b>Predicted Reactivity</b>	Dog, Rat
<b>Format</b>	Antigen affinity purified
<b>Host</b>	Goat
<b>Clonality</b>	Polyclonal (goat origin)
<b>Isotype</b>	Goat Ig
<b>Purity</b>	Antigen affinity
<b>Gene ID</b>	25932
<b>Localization</b>	Cytoplasmic, membranous
<b>Applications</b>	Western Blot : 0.1-0.3ug/ml IHC (FFPE) : 5ug/ml Immunofluorescence : 5ug/ml ELISA (peptide) LOD : 1:64000
<b>Limitations</b>	This CLIC4 antibody is available for research use only.



Western blot testing of human kidney lysate with CLIC4 antibody at 0.1ug/ml. Predicted molecular weight: ~29 kDa.



Immunofluorescence staining of min6 cells transiently expressing mouse Clic4 with CLIC4 antibody at 5ug/ml. Nuclear counter staining by Hoechst.



IHC testing of FFPE human heart tissue with CLIC4 antibody at 5ug/ml. Steamed antigen retrieval with citrate buffer pH 6, AP-staining.

## Description

Additional name(s) for this target protein: Chloride intracellular channel 4

## Application Notes

Optimal dilution of the CLIC4 antibody should be determined by the researcher.

## Immunogen

Amino acids NGLKEEDKEPLIE were used as the immunogen for this CLIC4 antibody.

## Storage

Aliquot and store the CLIC4 antibody at -20oC.