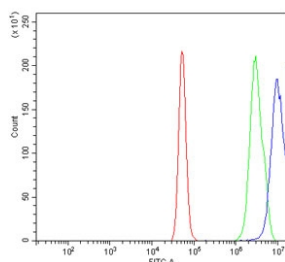


CLIC1 Antibody / hRNCC (RQ6545)

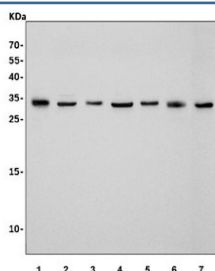
Catalog No.	Formulation	Size
RQ6545	0.5mg/ml if reconstituted with 0.2ml sterile DI water	100 ug

Bulk quote request

Availability	1-3 business days
Species Reactivity	Human, Rat, Monkey
Format	Antigen affinity purified
Clonality	Polyclonal (rabbit origin)
Isotype	Rabbit IgG
Purity	Affinity purified
Buffer	Lyophilized from 1X PBS with 2% Trehalose
UniProt	O00299
Applications	Western Blot : 1-2ug/ml Flow Cytometry : 1-3ug/million cells Direct ELISA : 0.1-0.5ug/ml
Limitations	This CLIC1 antibody is available for research use only.



Flow cytometry testing of human A431 cells with CLIC1 antibody at 1ug/million cells (blocked with goat sera); Red=cells alone, Green=isotype control, Blue= CLIC1 antibody.



Western blot testing of 1) human HL60, 2) human HeLa, 3) monkey COS-7, 4) human ThP-1, 5) human Caco-2, 6) human U937 and 7) rat kidney lysate with CLIC1 antibody. Expected molecular weight: 27-30 kDa.

Description

Chloride intracellular channel protein 1 is a protein that in humans is encoded by the CLIC1 gene. Chloride channels are a diverse group of proteins that regulate fundamental cellular processes including stabilization of cell membrane potential, transepithelial transport, maintenance of intracellular pH, and regulation of cell volume. Chloride intracellular channel 1 is a member of the p64 family; the protein localizes principally to the cell nucleus and exhibits both nuclear and plasma membrane chloride ion channel activity.

Application Notes

Optimal dilution of the CLIC1 antibody should be determined by the researcher.

Immunogen

An E. coli-derived human protein (amino acids D47-K241) was used as the immunogen for the CLIC1 antibody.

Storage

After reconstitution, the CLIC1 antibody can be stored for up to one month at 4°C. For long-term, aliquot and store at -20°C. Avoid repeated freezing and thawing.