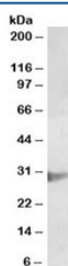


CLIC1 Antibody / hRNCC (R36310)

Catalog No.	Formulation	Size
R36310-100UG	0.5 mg/ml in 1X TBS, pH7.3, with 0.5% BSA (US sourced) and 0.02% sodium azide	100 ug

[Bulk quote request](#)

Availability	1-3 business days
Species Reactivity	Human
Predicted Reactivity	Mouse, Rat, Dog, Cow
Format	Antigen affinity purified
Clonality	Polyclonal (goat origin)
Isotype	Goat Ig
Purity	Antigen affinity
Gene ID	1192
Applications	Western Blot : 1-3ug/ml ELISA (peptide) LOD : 1:4000
Limitations	This CLIC1 antibody is available for research use only.



Western blot testing of U937 lysate with CLIC1 antibody at 2ug/ml. Expected molecular weight: 27-30 kDa.

Description

Additional name(s) for this target protein: Chloride intracellular channel 1; NCC27

Application Notes

Optimal dilution of the CLIC1 antibody should be determined by the researcher.

Immunogen

Amino acids TVDTKRRTETVQK were used as the immunogen for this CLIC1 antibody.

Storage

Aliquot and store the CLIC1 antibody at -20oC.