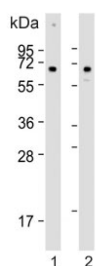


## CLEC4F Antibody (F54590)

Catalog No.	Formulation	Size
F54590-0.4ML	In 1X PBS, pH 7.4, with 0.09% sodium azide	0.4 ml
F54590-0.08ML	In 1X PBS, pH 7.4, with 0.09% sodium azide	0.08 ml

[Bulk quote request](#)

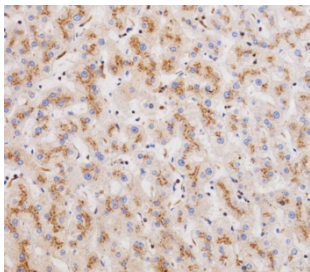
<b>Availability</b>	1-3 business days
<b>Species Reactivity</b>	Human
<b>Format</b>	Purified
<b>Clonality</b>	Polyclonal (rabbit origin)
<b>Isotype</b>	Rabbit Ig
<b>Purity</b>	Antigen affinity purified
<b>UniProt</b>	Q8N1N0
<b>Applications</b>	Immunohistochemistry (FFPE) : 1:25 Western Blot : 1:500-1:2000
<b>Limitations</b>	This CLEC4F antibody is available for research use only.



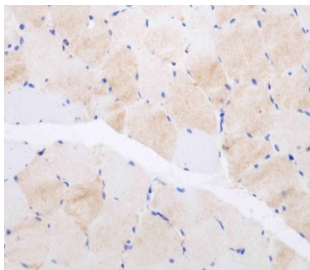
Western blot testing of human 1) HeLa and 2) U-2 OS cell lysate with CLEC4F antibody. Predicted molecular weight ~66 kDa.



Western blot testing of human CCRF-CEM cell lysate with CLEC4F antibody. Predicted molecular weight ~66 kDa.



IHC testing of FFPE human liver tissue with CLEC4F antibody. HIER: steam section in pH6 citrate buffer for 20 min and allow to cool prior to staining.



IHC testing of FFPE human skeletal muscle tissue with CLEC4F antibody. HIER: steam section in pH6 citrate buffer for 20 min and allow to cool prior to staining.

## Description

Receptor with an affinity for galactose and fucose. Could be involved in endocytosis (UniProt).

## Application Notes

The stated application concentrations are suggested starting points. Titration of the CLEC4F antibody may be required due to differences in protocols and secondary/substrate sensitivity.

## Immunogen

A portion of amino acids 311-339 from the human protein was used as the immunogen for the CLEC4F antibody.

## Storage

Aliquot the CLEC4F antibody and store frozen at -20oC or colder. Avoid repeated freeze-thaw cycles.