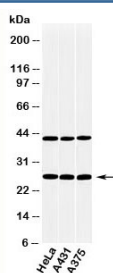


CLEC4E Antibody (N1058)

Catalog No.	Formulation	Size
N1058-100UG	0.5 mg/ml in 1X PBS with 0.1 mg/ml BSA (US sourced), 0.05% sodium azide	100 ug
N1058-25UG	0.5 mg/ml in 1X PBS with 0.1 mg/ml BSA (US sourced), 0.05% sodium azide	25 ug

[Bulk quote request](#)

Availability	1-3 business days
Species Reactivity	Human, Mouse, Rat
Format	Purified
Clonality	Polyclonal (rabbit origin)
Isotype	Rabbit IgG
Purity	Protein A affinity chromatography
Buffer	1X PBS, pH 7.4
Gene ID	26253
Applications	Western Blot : 2-5ug/ml
Limitations	This CLEC4E antibody is available for research use only.



Western blot testing of human samples with CLEC4E antibody at 2ug/ml.

Description

CLEC4 is a member of the C-type lectin family of proteins that plays a role in inflammatory and immune response. CLEC4E, also called Mincle (Macrophage-inducible C-type lectin), is found on the surface of activated macrophages and phagocytes. It is a receptor for both non-self (fungi and mycobacteria), and self (damaged cells) ligands. Dead cells release SAP130 (Sin3A-Associated Protein, 130kDa), a small nuclear ribonucleoprotein component. CLEC4E senses this and interacts with the ITAM-containing adaptor protein FcR γ , and via Syk and CARD9 signaling, activates the production of inflammatory cytokines such as TNF α , MIP-2 and IL-6.

Application Notes

Provided assay concentrations are suggestions only, CLEC4E antibody titration may be required for optimal results.

Immunogen

A recombinant protein fragment from the C-terminal portion of human CLEC4E was used as the immunogen for this antibody.

Storage

Aliquot the CLEC4E antibody and store frozen at -20oC or colder. Avoid repeated freeze-thaw cycles.

Alternate Names

C-type lectin domain family 4 member E, Macrophage-inducible C-type lectin, MINCLE antibody

References (1)