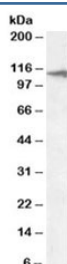


CLEC16A Antibody (R33744)

Catalog No.	Formulation	Size
R33744-100UG	0.5 mg/ml in 1X TBS, pH7.3, with 0.5% BSA (US sourced) and 0.02% sodium azide	100 ug

[Bulk quote request](#)

Availability	1-3 business days
Species Reactivity	Human
Format	Antigen affinity purified
Clonality	Polyclonal (goat origin)
Isotype	Goat Ig
Purity	Antigen affinity
Gene ID	23274
Applications	Western Blot : 1-3ug/ml ELISA (peptide) LOD : 1:1000
Limitations	This CLEC16A antibody is available for research use only.



Western blot testing of human liver lysate with CLEC16A antibody at 2ug/ml. Predicted molecular weight: ~118kDa.

Description

Additional name(s) for this target protein: C-type lectin domain family 16, member A

Application Notes

Optimal dilution of the CLEC16A antibody should be determined by the researcher.

Immunogen

Amino acids EEAACAEPVGTAED were used as the immunogen for this CLEC16A antibody.

Storage

Aliquot and store the CLEC16A antibody at -20oC.