

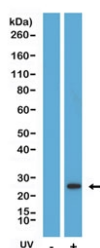
Cleaved Caspase 8 Antibody [clone RM442] (R20457)

Catalog No.	Formulation	Size
R20457-0.1ML	Antibody in PBS with 50% glycerol, 1% BSA and 0.09% sodium azide	100 ul

Recombinant **RABBIT MONOCLONAL**

[Bulk quote request](#)

Availability	1-3 business days
Species Reactivity	Human
Format	Purified
Host	Rabbit
Clonality	Recombinant Rabbit Monoclonal
Isotype	Rabbit IgG
Clone Name	RM442
Purity	Protein A purified from animal origin-free supernatant
UniProt	Q14790
Applications	Western Blot : 1:1000-1:2000
Limitations	This recombinant Cleaved Caspase 8 antibody is available for research use only.



Western blot testing of lysate from human HeLa cells, with or without UV treatment, using Cleaved Caspase 8 antibody at 1:2000 dilution.

Description

This antibody reacts specifically to the cleavage site on the pro domain created after being cleaved from the large subunit of Caspase 8.

Application Notes

The stated application concentrations are suggested starting points. Titration of the recombinant Cleaved Caspase 8 antibody may be required due to differences in protocols and secondary/substrate sensitivity.

Immunogen

A peptide encompassing the pro-domain-large subunit cleavage site of Caspase 8 was used as the immunogen for the Cleaved Caspase 8 antibody.

Storage

Store the recombinant Cleaved Caspase 8 antibody at -20oC.