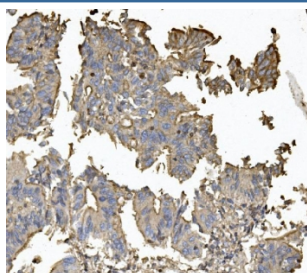


CLDN5 Antibody / Claudin 5 (RQ5715)

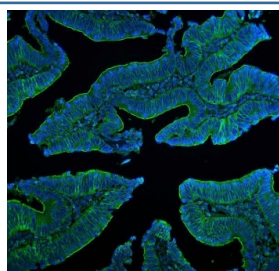
Catalog No.	Formulation	Size
RQ5715	0.5mg/ml if reconstituted with 0.2ml sterile DI water	100 ug

Bulk quote request

Availability	1-3 business days
Species Reactivity	Human
Format	Antigen affinity purified
Clonality	Polyclonal
Isotype	Rabbit IgG
Purity	Affinity purified
Buffer	Lyophilized from 1X PBS with 2% Trehalose and 0.025% sodium azide
UniProt	O00501
Applications	Immunohistochemistry (FFPE) : 1-2ug/ml Immunofluorescence : 2-4ug/ml
Limitations	This CLDN5 antibody is available for research use only.



IHC staining of FFPE human rectal cancer with CLDN5 antibody. HIER: boil tissue sections in pH8 EDTA for 20 min and allow to cool before testing.



Immunofluorescent staining of FFPE human intestinal cancer with CLDN5 antibody (green) and DAPI nuclear stain (blue). HIER: steam section in pH8 EDTA for 20 min.

Description

Claudin-5 is a protein that in humans is encoded by the CLDN5 gene. This gene encodes a member of the claudin family. Claudins are integral membrane proteins and components of tight junction strands. Tight junction strands serve as a physical barrier to prevent solutes and water from passing freely through the paracellular space between epithelial or endothelial cell sheets. Mutations in this gene have been found in patients with velocardiofacial syndrome. Alternative splicing results in multiple transcript variants encoding distinct isoforms.

Application Notes

Optimal dilution of the CLDN5 antibody should be determined by the researcher.

Immunogen

Amino acids KYSAPRRPTATGDYDKKNYV from the human protein were used as the immunogen for the CLDN5 antibody.

Storage

After reconstitution, the CLDN5 antibody can be stored for up to one month at 4°C. For long-term, aliquot and store at -20°C. Avoid repeated freezing and thawing.