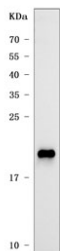


CLDN1 Antibody / Claudin 1 (RQ7683)

Catalog No.	Formulation	Size
RQ7683	0.5mg/ml if reconstituted with 0.2ml sterile DI water	100 ug

[Bulk quote request](#)

Availability	1-3 business days
Species Reactivity	Human
Format	Antigen affinity purified
Host	Rabbit
Clonality	Polyclonal (rabbit origin)
Isotype	Rabbit IgG
Purity	Antigen affinity purified
Buffer	Lyophilized from 1X PBS with 2% Trehalose
UniProt	O95832
Applications	Western Blot : 0.5-1ug/ml Direct ELISA : 0.1-0.5ug/ml
Limitations	This CLDN1 antibody is available for research use only.



Western blot testing of human A431 cell lysate with CLDN1 antibody. Expected molecular weight: 20-23 kDa.

Description

Claudin-1 is a protein that in humans is encoded by the CLDN1 gene. Tight junctions represent one mode of cell-to-cell adhesion in epithelial or endothelial cell sheets, forming continuous seals around cells and serving as a physical barrier to prevent solutes and water from passing freely through the paracellular space. These junctions are comprised of sets of continuous networking strands in the outwardly facing cytoplasmic leaflet, with complementary grooves in the inwardly facing extracytoplasmic leaflet. The protein encoded by this gene, a member of the claudin family, is an integral membrane protein and a component of tight junction strands. Loss of function mutations result in neonatal ichthyosis-

sclerosing cholangitis syndrome.

Application Notes

Optimal dilution of the CLDN1 antibody should be determined by the researcher.

Immunogen

E. coli-derived recombinant human protein (amino acids F96-V211) was used as the immunogen for the CLDN1 antibody.

Storage

After reconstitution, the CLDN1 antibody can be stored for up to one month at 4oC. For long-term, aliquot and store at -20oC. Avoid repeated freezing and thawing.