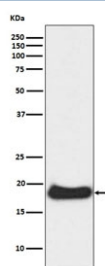


CLDN1 Antibody / Claudin 1 [clone ABEH-3] (RQ4817)

Catalog No.	Formulation	Size
RQ4817	Antibody in PBS with 0.02% sodium azide, 50% glycerol and 0.4-0.5mg/ml BSA	100 ul

[Bulk quote request](#)

Availability	1-2 weeks
Species Reactivity	Human
Format	Purified
Clonality	Rabbit Monoclonal
Isotype	Rabbit IgG
Clone Name	ABEH-3
Purity	Affinity purified
UniProt	O95832
Applications	Western Blot : 1:500-1:2000
Limitations	This CLDN1 antibody is available for research use only.



Western blot testing of human A431 cell lysate with CLDN1 antibody. Expected molecular weight: 20-23 kDa.

Description

Claudins function as major constituents of the tight junction complexes that regulate the permeability of epithelia. While some claudin family members play essential roles in the formation of impermeable barriers, others mediate the permeability to ions and small molecules. Often, several claudin family members are coexpressed and interact with each other, and this determines the overall permeability. CLDN1 is required to prevent the paracellular diffusion of small molecules through tight junctions in the epidermis and is required for the normal barrier function of the skin. [UniProt]

Application Notes

Optimal dilution of the CLDN1 antibody should be determined by the researcher.

Immunogen

A synthetic peptide specific to human Claudin 1 / CLDN1 was used as the immunogen for the CLDN1 antibody.

Storage

Store the CLDN1 antibody at -20oC.