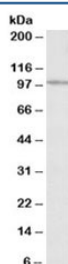


CLCN2 Antibody (R35412)

Catalog No.	Formulation	Size
R35412-100UG	0.5 mg/ml in 1X TBS, pH7.3, with 0.5% BSA (US sourced) and 0.02% sodium azide	100 ug

[Bulk quote request](#)

Availability	1-3 business days
Species Reactivity	Human
Predicted Reactivity	Cow, Dog, Mouse, Rabbit, Rat
Format	Antigen affinity purified
Clonality	Polyclonal (goat origin)
Isotype	Goat Ig
Purity	Antigen affinity
Gene ID	1181
Applications	Western Blot : 0.3-1ug/ml ELISA (peptide) LOD : 1:64000
Limitations	This CLCN2 antibody is available for research use only.



Western blot testing of HeLa lysate with CLCN2 antibody at 0.3ug/ml. Predicted molecular weight: ~99kDa.

Description

Additional name(s) for this target protein: Chloride channel 2

Application Notes

Optimal dilution of the CLCN2 antibody should be determined by the researcher.

Immunogen

Amino acids QQLDEPVNFSDCK were used as the immunogen for this CLCN2 antibody.

Storage

Aliquot and store the CLCN2 antibody at -20oC.