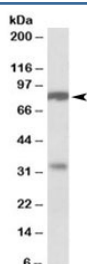


CLCA1 Antibody (R36316)

Catalog No.	Formulation	Size
R36316-100UG	0.5 mg/ml in 1X TBS, pH7.3, with 0.5% BSA (US sourced) and 0.02% sodium azide	100 ug

[Bulk quote request](#)

Availability	1-3 business days
Species Reactivity	Human
Format	Antigen affinity purified
Clonality	Polyclonal (goat origin)
Isotype	Goat Ig
Purity	Antigen affinity
Gene ID	1179
Applications	Western Blot : 1-3ug/ml ELISA (peptide) LOD : 1:16000
Limitations	This CLCA1 antibody is available for research use only.



Western blot testing of human duodenum lysate with CLCA1 antibody at 1ug/ml. Predicted molecular weight: ~100/125kDa (unmodified/glycosylated). The precursor is cleaved at AA695 and this Ab is specific to the ~77/83kDa (unmodified/glycosylated) form.

Description

Additional name(s) for this target protein: Calcium activated chloride channel 1

Application Notes

Optimal dilution of the CLCA1 antibody should be determined by the researcher.

Immunogen

Amino acids TVTSKTNKDTSK were used as the immunogen for this CLCA1 antibody. The precursor protein is cleaved at

AA695 and this AA sequence is from the larger N-terminal fragment.

Storage

Aliquot and store the CLCA1 antibody at -20oC.