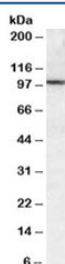


CLCA1 Antibody (R35003)

Catalog No.	Formulation	Size
R35003-100UG	0.5 mg/ml in 1X TBS, pH7.3, with 0.5% BSA (US sourced) and 0.02% sodium azide	100 ug

[Bulk quote request](#)

Availability	1-3 business days
Species Reactivity	Human
Format	Antigen affinity purified
Host	Goat
Clonality	Polyclonal (goat origin)
Isotype	Goat Ig
Purity	Antigen affinity
Gene ID	1179
Applications	Western Blot : 0.3-1ug/ml ELISA (peptide) LOD : 1:64000
Limitations	This CLCA1 antibody is available for research use only.



Western blot testing of human lung lysate with CLCA1 antibody at 0.3ug/ml. Predicted molecular weight: ~100/125kDa (unmodified/glycosylated).

Description

Additional name(s) for this target protein: Chloride channel calcium activated family member 1

Application Notes

Optimal dilution of the CLCA1 antibody should be determined by the researcher.

Immunogen

Amino acids PETPSPDETSAPC were used as the immunogen for this CLCA1 antibody. The precursor protein is cleaved at AA695 and this AA sequence is from the smaller C-terminal fragment. A 37-41kDa cleavage fragment may be visualized in some samples.

Storage

Aliquot and store the CLCA1 antibody at -20oC.