

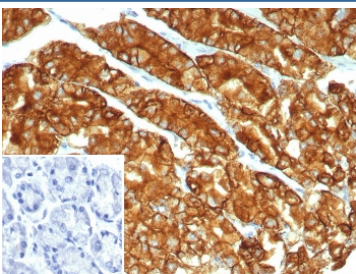
Claudin18.2 Antibody [clone CLDN18.2/8014R] (V5008)

Catalog No.	Formulation	Size
V5008-100UG	0.2 mg/ml in 1X PBS with 0.1 mg/ml BSA (US sourced), 0.05% sodium azide	100 ug
V5008-20UG	0.2 mg/ml in 1X PBS with 0.1 mg/ml BSA (US sourced), 0.05% sodium azide	20 ug
V5008SAF-100UG	1 mg/ml in 1X PBS; BSA free, sodium azide free	100 ug

Recombinant **RABBIT MONOCLONAL**

[Bulk quote request](#)

Availability	1-3 business days
Species Reactivity	Human
Format	Purified
Host	Rabbit
Clonality	Recombinant Rabbit Monoclonal
Isotype	Rabbit IgG, kappa
Clone Name	CLDN18.2/8014R
Purity	Protein A/G affinity
UniProt	P56856
Localization	Cell junction, Cell membrane
Applications	Immunohistochemistry (FFPE) : 1-2ug/ml for 30 min at RT
Limitations	This Claudin18.2 antibody is available for research use only.



Claudin18.2 Antibody Stomach IHC. Immunohistochemistry staining of FFPE human stomach tissue with Claudin18.2 antibody (clone CLDN18.2/8014R). Inset: PBS used in place of primary Ab (secondary Ab negative control). HIER: boil tissue sections in pH 9 10mM Tris with 1mM EDTA for 20 min and allow to cool before testing.

Description

Claudin18.2 Antibody specifically detects Claudin18.2 protein. The claudin superfamily consists of many structurally related proteins in humans. These proteins are important structural and functional components of tight junctions in

paracellular transport. Claudins are located in both epithelial and endothelial cells in all tight junction-bearing tissues. Three classes of proteins are known to localize to tight junctions, including the claudins, occludin and junction adhesion molecule. Claudins, which consist of four transmembrane domains and two extracellular loops, make up tight junction strands. Emerging evidence suggests that the claudin family of proteins regulates transport through tight junctions via differential discrimination for solute size and charge. Claudin expression is often highly restricted to specific regions of different tissues and may have an important role in transcellular transport through tight junctions.

Explore our [Claudin18.2 Antibody / Gastrointestinal Cancer Marker](#) page for additional validation data and research applications involving gastric cancer, pancreatic cancer, epithelial tight junction biology, and therapeutic target-associated oncology pathways.

Application Notes

Optimal dilution of the Claudin18.2 antibody should be determined by the researcher.

Immunogen

A recombinant partial protein sequence (within amino acids 1-100) from the human protein was used as the immunogen for the Claudin18.2 antibody.

Storage

Store the Claudin18.2 antibody at 2-8oC (with azide) or aliquot and store at -20oC or colder (without azide).

Alternate Names

Claudin18.2 antibody, CLDN18.2 antibody, Claudin 18 isoform 2 antibody, Tight junction protein Claudin18.2 antibody, Claudin18 gastric cancer marker antibody