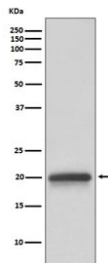


Claudin 5 Antibody / CLDN5 [clone AAHA-3] (RQ4696)

| Catalog No. | Formulation | Size |
|-------------|--|--------|
| RQ4696 | Antibody in PBS with 0.02% sodium azide, 50% glycerol and 0.4-0.5mg/ml BSA | 100 ul |

[Bulk quote request](#)

| | |
|---------------------------|---|
| Availability | 1-2 weeks |
| Species Reactivity | Human |
| Format | Purified |
| Host | Rabbit |
| Clonality | Rabbit Monoclonal |
| Isotype | Rabbit IgG |
| Clone Name | AAHA-3 |
| Purity | Affinity purified |
| UniProt | O00501 |
| Applications | Western Blot : 1:500-1:2000 |
| Limitations | This Claudin 5 antibody is available for research use only. |



Western blot testing of human fetal brain lysate with Claudin 5 antibody. Predicted molecular weight ~23 kDa.

Description

The CLDN5 gene encodes a member of the claudin family. Claudins are integral membrane proteins and components of tight junction strands. Tight junction strands serve as a physical barrier to prevent solutes and water from passing freely through the paracellular space between epithelial or endothelial cell sheets. Mutations in this gene have been found in patients with velocardiofacial syndrome. [RefSeq]

Application Notes

Optimal dilution of the Claudin 5 antibody should be determined by the researcher.

Immunogen

A synthetic peptide specific to human Claudin 5 / CLDN5 was used as the immunogen for the Claudin 5 antibody.

Storage

Store the Claudin 5 antibody at -20oC.