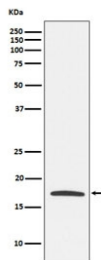


Claudin 4 Antibody / CLDN4 [clone ADEB-3] (RQ4699)

Catalog No.	Formulation	Size
RQ4699	Antibody in PBS with 0.02% sodium azide, 50% glycerol and 0.4-0.5mg/ml BSA	100 ul

[Bulk quote request](#)

Availability	1-2 weeks
Species Reactivity	Human
Format	Purified
Host	Rabbit
Clonality	Rabbit Monoclonal
Isotype	Rabbit IgG
Clone Name	ADEB-3
Purity	Affinity purified
UniProt	O14493
Applications	Western Blot : 1:500-1:1000
Limitations	This Claudin 4 antibody is available for research use only.



Western blot testing with Claudin 4 antibody. Predicted molecular weight ~22 kDa.

Description

Claudin 4 plays a major role in tight junction-specific obliteration of the intercellular space.

Application Notes

Optimal dilution of the Claudin 4 antibody should be determined by the researcher.

Immunogen

A synthetic peptide specific to human Claudin 4 / CLDN4 was used as the immunogen for the Claudin 4 antibody.

Storage

Store the Claudin 4 antibody at -20oC.