

Claudin 2 Antibody (R30144)

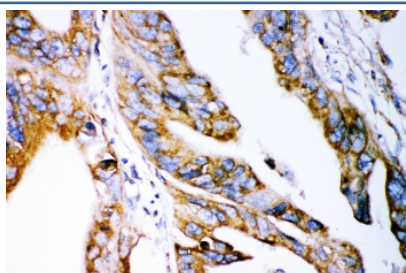
Catalog No.	Formulation	Size
R30144	0.5mg/ml if reconstituted with 0.2ml sterile DI water	100 ug

Bulk quote request

Availability	1-3 business days
Species Reactivity	Human, Rat
Format	Antigen affinity purified
Clonality	Polyclonal (rabbit origin)
Isotype	Rabbit IgG
Purity	Antigen affinity
Buffer	Lyophilized from 1X PBS with 2.5% BSA and 0.025% sodium azide
Gene ID	9075
Applications	Western Blot : 0.5-1ug/ml IHC (FFPE) : 0.5-1ug/ml
Limitations	This Claudin 2 antibody is available for research use only.



Western blot testing of Claudin 2 antibody and Lane 1: rat kidney; 2: rat liver



IHC-P: Claudin 2 antibody testing of human intestinal cancer tissue

Description

Claudin 2 is a protein that in humans is encoded by the CLDN2 gene. By genomic sequence analysis, this gene is mapped to chromosome Xq22.3-q23. This gene product belongs to the claudin protein family whose members have been identified as major integral membrane proteins localized exclusively at tight junctions. Claudins are expressed in an organ-specific manner and regulate tissue-specific physiologic properties of tight junctions. By expression in a human intestinal epithelial cell line, it was determined that the intestine-specific homeodomain proteins CDX1 and CDX2 activated a reporter plasmid driven by the CLDN2 promoter.

Application Notes

The stated application concentrations are suggested starting points. Titration of the Claudin 2 antibody may be required due to differences in protocols and secondary/substrate sensitivity.

Immunogen

Human partial recombinant protein (AA 38-230) was used as the immunogen for this Claudin 2 antibody.

Storage

After reconstitution, the Claudin 2 antibody can be stored for up to one month at 4°C. For long-term, aliquot and store at -20°C. Avoid repeated freezing and thawing.