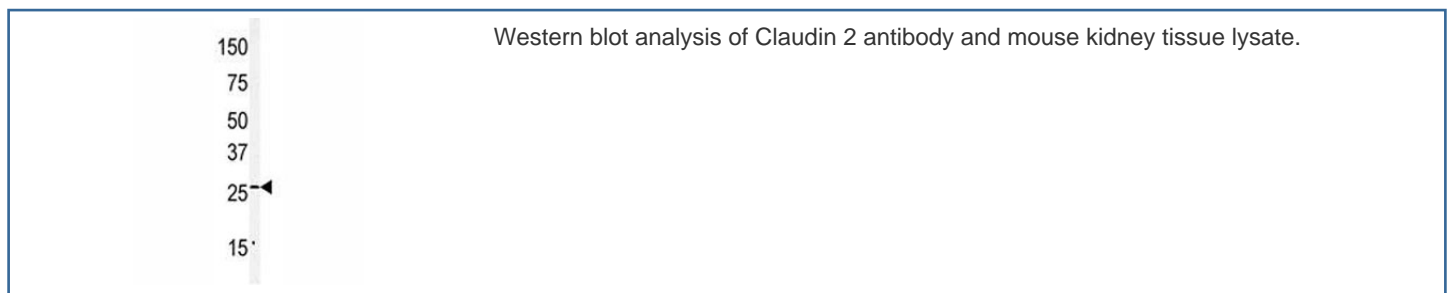


## Claudin 2 Antibody (F49581)

Catalog No.	Formulation	Size
F49581-0.4ML	In 1X PBS, pH 7.4, with 0.09% sodium azide	0.4 ml
F49581-0.08ML	In 1X PBS, pH 7.4, with 0.09% sodium azide	0.08 ml

[Bulk quote request](#)

<b>Availability</b>	1-3 business days
<b>Species Reactivity</b>	Human
<b>Format</b>	Antigen affinity purified
<b>Host</b>	Rabbit
<b>Clonality</b>	Polyclonal (rabbit origin)
<b>Isotype</b>	Rabbit Ig
<b>Purity</b>	Antigen affinity
<b>UniProt</b>	P57739
<b>Applications</b>	Western Blot : 1:1000
<b>Limitations</b>	This Claudin 2 antibody is available for research use only.



## Description

Members of the claudin protein family, such as CLDN2, are expressed in an organ-specific manner and regulate the tissue-specific physiologic properties of tight junctions.

## Application Notes

Titration of the Claudin 2 antibody may be required due to differences in protocols and secondary/substrate sensitivity.

## **Immunogen**

A portion of amino acids 190-220 from the human protein was used as the immunogen for this Claudin 2 antibody.

## **Storage**

Aliquot the Claudin 2 antibody and store frozen at -20oC or colder. Avoid repeated freeze-thaw cycles.