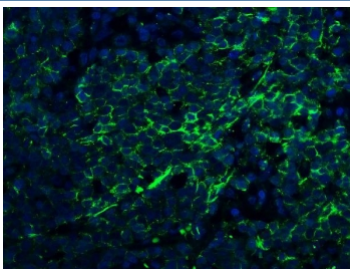


Claudin 1 Antibody / CLDN1 (RQ5712)

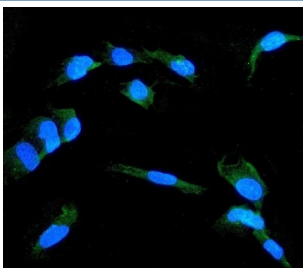
Catalog No.	Formulation	Size
RQ5712	0.5mg/ml if reconstituted with 0.2ml sterile DI water	100 ug

[Bulk quote request](#)

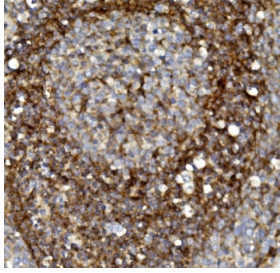
Availability	1-3 business days
Species Reactivity	Human
Format	Antigen affinity purified
Host	Rabbit
Clonality	Polyclonal
Isotype	Rabbit IgG
Purity	Affinity purified
Buffer	Lyophilized from 1X PBS with 2% Trehalose and 0.025% sodium azide
UniProt	O95832
Localization	Cytoplasmic
Applications	Immunohistochemistry (FFPE) : 1-2ug/ml Immunofluorescence : 2-4ug/ml
Limitations	This Claudin 1 antibody is available for research use only.



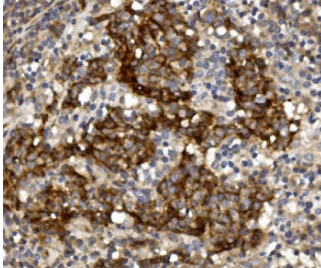
Immunofluorescent staining of FFPE human lung cancer with Claudin 1 antibody (green) and DAPI nuclear stain (blue). HIER: steam section in pH8 EDTA for 20 min.



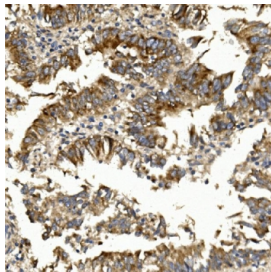
Immunofluorescent staining of FFPE human A549 cells with Claudin 1 antibody (green) and DAPI nuclear stain (blue). HIER: steam section in pH6 citrate buffer for 20 min.



IHC staining of FFPE human lung cancer with Claudin 1 antibody. HIER: boil tissue sections in pH8 EDTA for 20 min and allow to cool before testing.



IHC staining of FFPE human lung cancer with Claudin 1 antibody. HIER: boil tissue sections in pH8 EDTA for 20 min and allow to cool before testing.



IHC staining of FFPE human rectal cancer with Claudin 1 antibody. HIER: boil tissue sections in pH8 EDTA for 20 min and allow to cool before testing.

Description

Claudin-1 is a protein that in humans is encoded by the CLDN1 gene. Tight junctions represent one mode of cell-to-cell adhesion in epithelial or endothelial cell sheets, forming continuous seals around cells and serving as a physical barrier to prevent solutes and water from passing freely through the paracellular space. These junctions are comprised of sets of continuous networking strands in the outwardly facing cytoplasmic leaflet, with complementary grooves in the inwardly facing extracytoplasmic leaflet. The protein encoded by this gene, a member of the claudin family, is an integral membrane protein and a component of tight junction strands. Loss of function mutations result in neonatal ichthyosis-sclerosing cholangitis syndrome.

Application Notes

Optimal dilution of the Claudin 1 antibody should be determined by the researcher.

Immunogen

Amino acids ATAWYGNRIVQEFYD from the human protein were used as the immunogen for the Claudin 1 antibody.

Storage

After reconstitution, the Claudin 1 antibody can be stored for up to one month at 4°C. For long-term, aliquot and store at -20°C. Avoid repeated freezing and thawing.

