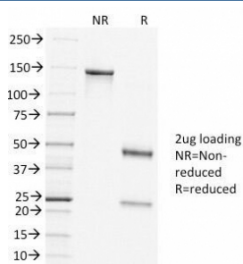


Clathrin Heavy Chain Antibody [clone CLTC/1431] (V3298)

Catalog No.	Formulation	Size
V3298-100UG	0.2 mg/ml in 1X PBS with 0.1 mg/ml BSA (US sourced) and 0.05% sodium azide	100 ug
V3298-20UG	0.2 mg/ml in 1X PBS with 0.1 mg/ml BSA (US sourced) and 0.05% sodium azide	20 ug
V3298SAF-100UG	1 mg/ml in 1X PBS; BSA free, sodium azide free	100 ug

[Bulk quote request](#)

Availability	1-2 business days
Species Reactivity	Human
Format	Purified
Host	Mouse
Clonality	Monoclonal (mouse origin)
Isotype	Mouse IgG1, kappa
Clone Name	CLTC/1431
Purity	Protein G affinity chromatography
UniProt	P53675, Q00610
Localization	Cytoplasmic
Applications	ELISA (order BSA/sodium Azide-free Format For Coating) :
Limitations	This Clathrin Heavy Chain antibody is available for research use only.



SDS-PAGE Analysis of Purified, BSA-Free Clathrin Heavy Chain Antibody (clone CLTC/1431). Confirmation of Integrity and Purity of the Antibody.

Description

Recognizes protein of 192kDa, which is identified as Clathrin Heavy Chain. Clathrin is composed of three heavy chains and three light chains, which associate non-covalently to form a triskelion structure. Clathrin heavy chain (HC) is composed of a terminal globular domain, a distal segment and a proximal segment containing a light chain-binding site. The proximal segment of the Clathrin HC protein is essential for interactions between Clathrin heavy chains and light chains, which result in the formation of the triskelion structure.

Application Notes

Optimal dilution of the Clathrin Heavy Chain antibody should be determined by the researcher.

Immunogen

A recombinant N-terminal protein fragment from human Clathrin heavy chain was used as the immunogen for the Clathrin Heavy Chain antibody.

Storage

Store the Clathrin Heavy Chain antibody at 2-8oC (with azide) or aliquot and store at -20oC or colder (without azide).