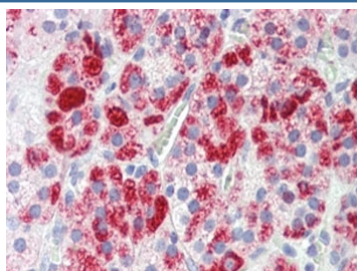


Clathrin Heavy Chain Antibody / CLTC (R36485)

Catalog No.	Formulation	Size
R36485-100UG	0.5 mg/ml in 1X TBS, pH7.3, with 0.5% BSA (US sourced) and 0.02% sodium azide	100 ug

[Bulk quote request](#)

Availability	1-3 business days
Species Reactivity	Human, Mouse, Rat, Cow, Dog
Format	Antigen affinity purified
Host	Goat
Clonality	Polyclonal (goat origin)
Isotype	Goat Ig
Purity	Antigen affinity
UniProt	Q00610
Applications	IHC (FFPE) : 3-6ug/ml ELISA (peptide) LOD : 1:32000
Limitations	This Clathrin Heavy Chain antibody is available for research use only.



IHC testing of FFPE human adrenal cortex tissue with Clathrin Heavy Chain antibody at 3.8ug/ml. HIER: steam section in pH6 citrate buffer for 20 min.

Description

Alternate name(s) for this target: CLTC; Clathrin, heavy chain (Hc); CHC17; CLH-17; CLTCL2

Application Notes

Optimal dilution of the Clathrin Heavy Chain antibody should be determined by the researcher.

Immunogen

Amino acids ESLRKEEEQATETQ were used as the immunogen for this Clathrin Heavy Chain antibody.

Storage

Aliquot and store the Clathrin Heavy Chain antibody at -20oC.