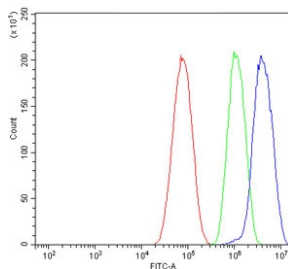


## Clathrin heavy chain Antibody / CLTC [clone 6D3] (RQ6408)

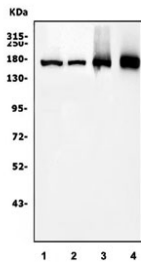
Catalog No.	Formulation	Size
RQ6408	0.5mg/ml if reconstituted with 0.2ml sterile DI water	100 ug

[Bulk quote request](#)

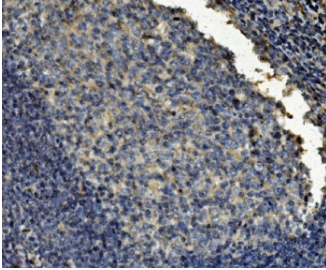
<b>Availability</b>	1-3 business days
<b>Species Reactivity</b>	Human
<b>Format</b>	Purified
<b>Host</b>	Mouse
<b>Clonality</b>	Monoclonal (mouse origin)
<b>Isotype</b>	Mouse IgG2b
<b>Clone Name</b>	6D3
<b>Purity</b>	Antigen affinity purified
<b>Buffer</b>	Lyophilized from 1X PBS with 2% Trehalose
<b>UniProt</b>	Q00610
<b>Localization</b>	Cytoplasmic
<b>Applications</b>	Western Blot : 0.5-1ug/ml Immunohistochemistry (FFPE) : 2-5ug/ml Flow Cytometry : 1-3ug/million cells
<b>Limitations</b>	This Clathrin heavy chain antibody is available for research use only.



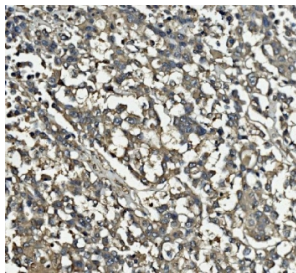
Flow cytometry testing of human HepG2 cells with Clathrin heavy chain antibody at 1ug/million cells (blocked with goat sera); Red=cells alone, Green=isotype control, Blue= Clathrin heavy chain antibody.



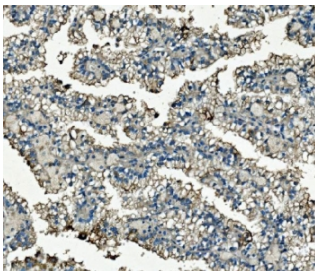
Western blot testing of 1) human HeLa, 2) human A431, 3) rat brain and 4) mouse brain tissue lysate with Clathrin heavy chain antibody. Predicted molecular weight ~192 kDa.



IHC staining of FFPE human tonsil tissue with Clathrin heavy chain antibody. HIER: boil tissue sections in pH8 EDTA for 20 min and allow to cool before testing.



IHC staining of FFPE human pancreatic cancer tissue with Clathrin heavy chain antibody. HIER: boil tissue sections in pH8 EDTA for 20 min and allow to cool before testing.



IHC staining of FFPE human renal carcinoma tissue with Clathrin heavy chain antibody. HIER: boil tissue sections in pH8 EDTA for 20 min and allow to cool before testing.

## Description

Clathrin heavy chain 1 is a protein that in humans is encoded by the CLTC gene. Clathrin is a major protein component of the cytoplasmic face of intracellular organelles, called coated vesicles and coated pits. These specialized organelles are involved in the intracellular trafficking of receptors and endocytosis of a variety of macromolecules. The basic subunit of the clathrin coat is composed of three heavy chains and three light chains.

## Application Notes

Optimal dilution of the Clathrin heavy chain antibody should be determined by the researcher.

## Immunogen

Recombinant human protein (amino acids R967-Q1668) was used as the immunogen for the Clathrin heavy chain antibody.

## Storage

After reconstitution, the Clathrin heavy chain antibody can be stored for up to one month at 4°C. For long-term, aliquot and store at -20°C. Avoid repeated freezing and thawing.

