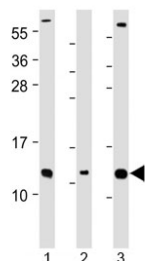


## CKS2 Antibody / Cyclin-dependent kinases regulatory subunit 2 (N-Terminal Region) (F54161)

Catalog No.	Formulation	Size
F54161-0.2ML	In 1X PBS, pH 7.4, with 0.09% sodium azide	0.2 ml
F54161-0.05ML	In 1X PBS, pH 7.4, with 0.09% sodium azide	0.05 ml

[Bulk quote request](#)

<b>Availability</b>	1-3 business days
<b>Species Reactivity</b>	Human
<b>Predicted Reactivity</b>	Bovine, Mouse
<b>Format</b>	Antigen affinity purified
<b>Host</b>	Rabbit
<b>Clonality</b>	Polyclonal (rabbit origin)
<b>Isotype</b>	Rabbit Ig
<b>Purity</b>	Antigen affinity
<b>UniProt</b>	P33552
<b>Applications</b>	Western Blot : 1:1000-1:2000
<b>Limitations</b>	This CKS2 antibody is available for research use only.



Western blot testing of human 1) Caco-2, 2) RMPI-8226 and 3) SH-SY5Y cell lysate with CKS2 antibody at 1:2000. Predicted molecular weight ~10 kDa.

### Description

Cyclin-dependent kinases regulatory subunit 2 (CKS2) binds to the catalytic subunit of the cyclin dependent kinases and is essential for their biological function.

### Application Notes

The stated application concentrations are suggested starting points. Titration of the CKS2 antibody may be required due to differences in protocols and secondary/substrate sensitivity.

## **Immunogen**

A portion of amino acids 6-40 from human CKS2 was used as the immunogen for the CKS2 antibody.

## **Storage**

Aliquot the CKS2 antibody and store frozen at -20oC or colder. Avoid repeated freeze-thaw cycles.