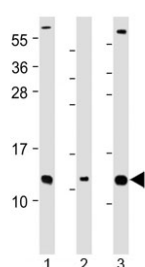


CKS2 Antibody / Cyclin-dependent kinases regulatory subunit 2 (N-Terminal Region) (F54161)

Catalog No.	Formulation	Size
F54161-0.2ML	In 1X PBS, pH 7.4, with 0.09% sodium azide	0.2 ml
F54161-0.05ML	In 1X PBS, pH 7.4, with 0.09% sodium azide	0.05 ml

Bulk quote request

Availability	1-3 business days
Species Reactivity	Human
Predicted Reactivity	Bovine, Mouse
Format	Antigen affinity purified
Clonality	Polyclonal (rabbit origin)
Isotype	Rabbit Ig
Purity	Antigen affinity
UniProt	P33552
Applications	Western Blot : 1:1000-1:2000
Limitations	This CKS2 antibody is available for research use only.



Western blot testing of human 1) Caco-2, 2) RMPI-8226 and 3) SH-SY5Y cell lysate with CKS2 antibody at 1:2000. Predicted molecular weight ~10 kDa.

Description

Cyclin-dependent kinases regulatory subunit 2 (CKS2) binds to the catalytic subunit of the cyclin dependent kinases and is essential for their biological function.

Application Notes

The stated application concentrations are suggested starting points. Titration of the CKS2 antibody may be required due to differences in protocols and secondary/substrate sensitivity.

Immunogen

A portion of amino acids 6-40 from human CKS2 was used as the immunogen for the CKS2 antibody.

Storage

Aliquot the CKS2 antibody and store frozen at -20oC or colder. Avoid repeated freeze-thaw cycles.