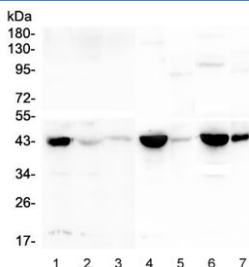


CKM Antibody / Creatine Kinase M (RQ4673)

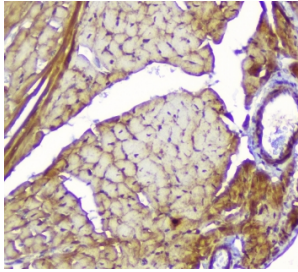
Catalog No.	Formulation	Size
RQ4673	0.5mg/ml if reconstituted with 0.2ml sterile DI water	100 ug

[Bulk quote request](#)

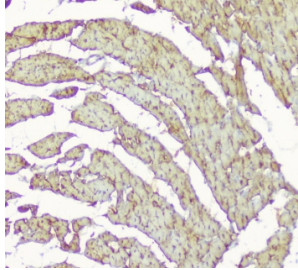
Availability	1-3 business days
Species Reactivity	Human, Mouse, Rat
Format	Antigen affinity purified
Host	Rabbit
Clonality	Polyclonal (rabbit origin)
Isotype	Rabbit IgG
Purity	Antigen affinity purified
Buffer	Lyophilized from 1X PBS with 2% Trehalose and 0.025% sodium azide
UniProt	P06732
Localization	Cytoplasmic
Applications	Western Blot : 0.5-1ug/ml IHC (FFPE) : 1-2ug/ml Direct ELISA : 0.1-0.5ug/ml (human recombinant protein)
Limitations	This CKM antibody is available for research use only.



Western blot testing of 1) human K562, 2) human CNE, 3) human COLO-320, 4) rat heart, 5) rat lung, 6) mouse heart and 7) mouse lung lysate with CKM antibody at 0.5ug/ml. Predicted molecular weight ~43 kDa.



IHC staining of FFPE mouse heart with CKM antibody at 1ug/ml. HIER: boil tissue sections in pH6, 10mM citrate buffer, for 10-20 min followed by cooling at RT for 20 min.



IHC staining of FFPE rat heart with CKM antibody at 1ug/ml. HIER: boil tissue sections in pH6, 10mM citrate buffer, for 10-20 min followed by cooling at RT for 20 min.

Description

Creatine kinase M-type, muscle, also known as CKM, is a creatine kinase that in humans is encoded by the CKM gene. This gene is mapped to 19q13.32. The protein encoded by this gene is a cytoplasmic enzyme involved in energy homeostasis and is an important serum marker for myocardial infarction. The encoded protein reversibly catalyzes the transfer of phosphate between ATP and various phosphogens such as creatine phosphate. It acts as a homodimer in striated muscle as well as in other tissues, and as a heterodimer with a similar brain isozyme in heart. The encoded protein is a member of the ATP:guanido phosphotransferase protein family.

Application Notes

Optimal dilution of the CKM antibody should be determined by the researcher.

Immunogen

Amino acids F3-K381 from the human protein were used as the immunogen for the CKM antibody.

Storage

After reconstitution, the CKM antibody can be stored for up to one month at 4oC. For long-term, aliquot and store at -20oC. Avoid repeated freezing and thawing.