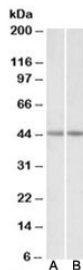


CKM Antibody / Creatine kinase M (R35329)

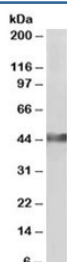
Catalog No.	Formulation	Size
R35329-100UG	0.5 mg/ml in 1X TBS, pH7.3, with 0.5% BSA (US sourced) and 0.02% sodium azide	100 ug

[Bulk quote request](#)

Availability	1-3 business days
Species Reactivity	Human, Mouse, Pig
Predicted Reactivity	Rat, Dog, Cow
Format	Antigen affinity purified
Host	Goat
Clonality	Polyclonal (goat origin)
Isotype	Goat Ig
Purity	Antigen affinity
Gene ID	1158
Applications	Western Blot : 0.03-0.1ug/ml ELISA (peptide) LOD : 1:8000
Limitations	This CKM antibody is available for research use only.



Western blot testing of human [A] and mouse [B] heart lysates with CKM antibody at 0.03ug/ml. Predicted molecular weight: ~43kDa.



Western blot of pig heart lysate with CKM antibody at 0.3ug/ml. Predicted molecular weight: ~43kDa.

Description

Additional name(s) for this target protein: Creatine kinase M-type

Application Notes

Optimal dilution of the CKM antibody should be determined by the researcher.

Immunogen

Amino acids QKIEEIFKKAGHP were used as the immunogen for this CKM antibody.

Storage

Aliquot and store the CKM antibody at -20oC.