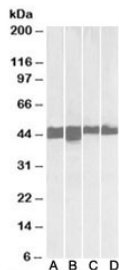


CKM Antibody / Creatine kinase M (R34932)

Catalog No.	Formulation	Size
R34932-100UG	0.5 mg/ml in 1X TBS, pH7.3, with 0.5% BSA (US sourced) and 0.02% sodium azide	100 ug

[Bulk quote request](#)

Availability	1-3 business days
Species Reactivity	Human, Mouse
Predicted Reactivity	Dog
Format	Antigen affinity purified
Host	Goat
Clonality	Polyclonal (goat origin)
Isotype	Goat Ig
Purity	Antigen affinity
Gene ID	1158
Applications	Western Blot : 0.01-0.03ug/ml ELISA (peptide) LOD : 1:128000
Limitations	This CKM antibody is available for research use only.



Western blot testing of A) human skeletal muscle, B) mouse skeletal muscle, C) human heart and D) mouse heart with CKM antibody at 0.01ug/ml. Predicted molecular weight: ~43kDa.

Description

Additional name(s) for this target protein: Creatine kinase M-type

Application Notes

Optimal dilution of the CKM antibody should be determined by the researcher.

Immunogen

Amino acids NTHNKFKLNYKPEE were used as the immunogen for this CKM antibody.

Storage

Aliquot and store the CKM antibody at -20oC.