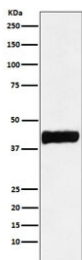


CKB Antibody / Creatine kinase B [clone AFOC-3] (RQ5384)

| Catalog No. | Formulation | Size |
|-------------|--|--------|
| RQ5384 | Antibody in PBS with 0.02% sodium azide, 50% glycerol and 0.4-0.5mg/ml BSA | 100 ul |

[Bulk quote request](#)

| | |
|---------------------------|---|
| Availability | 1-2 weeks |
| Species Reactivity | Human, Mouse, Rat |
| Format | Purified |
| Host | Rabbit |
| Clonality | Rabbit Monoclonal |
| Isotype | Rabbit IgG |
| Clone Name | AFOC-3 |
| Purity | Affinity purified |
| UniProt | P12277 |
| Applications | Western Blot : 1:1000-1:5000 |
| Limitations | This CKB antibody is available for research use only. |



CKB Antibody SH-SY5Y Cell WB. Western blot testing of human SH-SY5Y cell lysate with CKB antibody. Predicted molecular weight ~43 kDa.

Description

The protein encoded by the CKB gene is a cytoplasmic enzyme involved in energy homeostasis. The encoded protein reversibly catalyzes the transfer of phosphate between ATP and various phosphogens such as creatine phosphate. It acts as a homodimer in brain as well as in other tissues, and as a heterodimer with a similar muscle isozyme in heart. The encoded protein is a member of the ATP:guanido phosphotransferase protein family. [RefSeq]

This Creatine Kinase B Western Blot Antibody is part of a broader [Creatine Kinase B antibody for WB panel](#) offered by

NSJ Bioreagents.

Application Notes

Optimal dilution of the CKB antibody should be determined by the researcher.

Immunogen

A synthetic peptide specific to human Creatine kinase B was used as the immunogen for the CKB antibody.

Storage

Store the CKB antibody at -20oC.