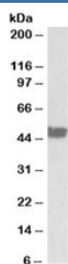


## CK20 Antibody / KRT20 / Cytokeratin 20 (R34922)

Catalog No.	Formulation	Size
R34922-100UG	0.5 mg/ml in 1X TBS, pH7.3, with 0.5% BSA (US sourced) and 0.02% sodium azide	100 ug

[Bulk quote request](#)

Availability	1-3 business days
Species Reactivity	Human
Format	Antigen affinity purified
Clonality	Polyclonal (goat origin)
Isotype	Goat Ig
Purity	Antigen affinity
Gene ID	54474
Applications	Western Blot : 0.01-0.03ug/ml Enzyme ImmunoAssay : used as capture for recombinant protein ELISA (peptide) LOD : 1:128000
Limitations	This CK20 antibody is available for research use only.



Western blot testing of human colon lysate with CK20 antibody at 0.03ug/ml. Predicted molecular weight: ~49kDa.

### Description

Additional name(s) for this target protein: KRT20, keratin 20, CK-20, Cytokeratin 20

### Application Notes

Optimal dilution of the CK20 antibody should be determined by the researcher.

### Immunogen

Amino acids NSRHTVNYGSDLT were used as the immunogen for this CK20 antibody.

## **Storage**

Aliquot and store the CK20 antibody at -20oC.