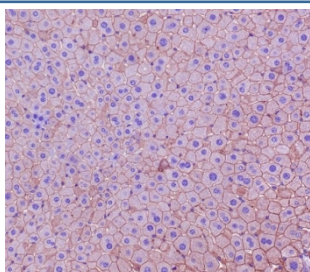


CK18 Antibody / Cytokeratin 18 [clone GBF-11] (RQ5131)

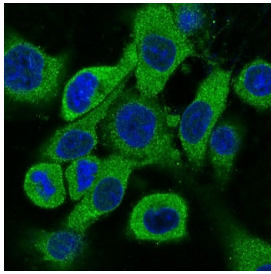
Catalog No.	Formulation	Size
RQ5131	Antibody in PBS with 0.02% sodium azide, 50% glycerol and 0.4-0.5mg/ml BSA	100 ul

[Bulk quote request](#)

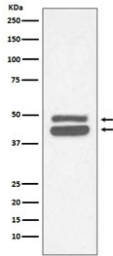
Availability	1-2 weeks
Species Reactivity	Human, Mouse, Rat
Format	Purified
Host	Rabbit
Clonality	Rabbit Monoclonal
Isotype	Rabbit IgG
Clone Name	GBF-11
Purity	Affinity purified
UniProt	P05784
Applications	Western Blot : 1:500-1:2000 Immunohistochemistry (FFPE) : 1:100-1:500 Immunofluorescence/Immunocytochemistry : 1:50-1:200
Limitations	This CK18 antibody is available for research use only.



IHC staining of FFPE mouse liver tissue with CK18 antibody. HIER: boil tissue sections in pH6, 10mM citrate buffer, for 10-20 min and allow to cool before testing.



IF/ICC staining of rat PC-12 cells with CK18 antibody (green) and DAP nuclear stain (blue).



Western blot testing of human HeLa cell lysate with CK18 antibody. Predicted molecular weight ~48 kDa.

Description

KRT18 encodes the type I intermediate filament chain keratin 18. Cytokeratin 18, together with its filament partner keratin 8, are perhaps the most commonly found members of the intermediate filament gene family. They are expressed in single layer epithelial tissues of the body. Mutations in this gene have been linked to cryptogenic cirrhosis. [RefSeq]

Application Notes

Optimal dilution of the CK18 antibody should be determined by the researcher.

Immunogen

A synthetic peptide specific to human Cytokeratin 18 / KRT18 was used as the immunogen for the CK18 antibody.

Storage

Store the CK18 antibody at -20°C.