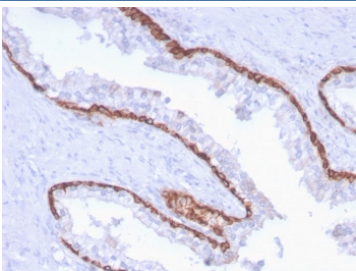


## CK15 Antibody / Cytokeratin 15 [clone KRT15/2959] (V7919)

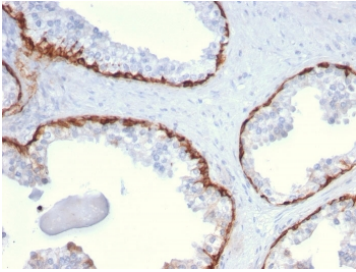
Catalog No.	Formulation	Size
V7919-100UG	0.2 mg/ml in 1X PBS with 0.1 mg/ml BSA (US sourced) and 0.05% sodium azide	100 ug
V7919-20UG	0.2 mg/ml in 1X PBS with 0.1 mg/ml BSA (US sourced) and 0.05% sodium azide	20 ug
V7919SAF-100UG	1 mg/ml in 1X PBS; BSA free, sodium azide free	100 ug

### Bulk quote request

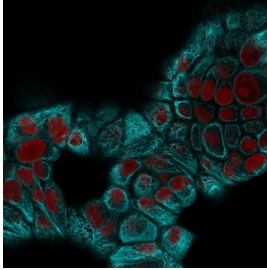
<b>Availability</b>	1-3 business days
<b>Species Reactivity</b>	Human
<b>Format</b>	Purified
<b>Host</b>	Mouse
<b>Clonality</b>	Monoclonal (mouse origin)
<b>Isotype</b>	Mouse IgG2c, kappa
<b>Clone Name</b>	KRT15/2959
<b>Purity</b>	Protein G affinity chromatography
<b>UniProt</b>	P19012
<b>Localization</b>	Cytoplasmic
<b>Applications</b>	Immunofluorescence : 1-2ug/ml Western Blot : 1-2ug/ml Immunohistochemistry (FFPE) : 1-2ug/ml
<b>Limitations</b>	This CK15 antibody is available for research use only.



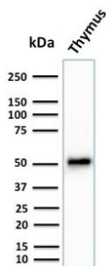
IHC staining of FFPE human prostate carcinoma with CK15 antibody (clone KRT15/2959). HIER: boil tissue sections in pH 9 10mM Tris with 1mM EDTA for 10-20 min and allow to cool before testing.



IHC staining of FFPE human prostate carcinoma with CK15 antibody (clone KRT15/2959). HIER: boil tissue sections in pH 9 10mM Tris with 1mM EDTA for 10-20 min and allow to cool before testing.



Immunofluorescent staining of MeOH-fixed human MCF7 cells with CK15 antibody (clone KRT15/2959, green) and Reddot nuclear stain (red).



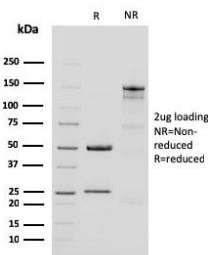
Western blot testing of human thymus tissue lysate with CK15 antibody (clone KRT15/2959). Expected molecular weight ~50 kDa.

#### Human Protein Microarray Specificity Validation



Analysis of HuProt(TM) microarray containing more than 19,000 full-length human proteins using CK15 antibody (clone KRT15/2959). These results demonstrate the foremost specificity of the KRT15/2959 mAb.

Z- and S- score: The Z-score represents the strength of a signal that an antibody (in combination with a fluorescently-tagged anti-IgG secondary Ab) produces when binding to a particular protein on the HuProt(TM) array. Z-scores are described in units of standard deviations (SD's) above the mean value of all signals generated on that array. If the targets on the HuProt(TM) are arranged in descending order of the Z-score, the S-score is the difference (also in units of SD's) between the Z-scores. The S-score therefore represents the relative target specificity of an Ab to its intended target.



SDS-PAGE analysis of purified, BSA-free CK15 antibody (clone KRT15/2959) as confirmation of integrity and purity.

## Description

Keratin 15 is a type I keratin which is expressed only in basal keratinocytes in stratified epithelia and does not appear to have a natural type II expression partner. Keratin 15 is down regulated in activated keratinocytes. Cytokeratin 15 is a specific marker of stem cells of the hair-follicle bulge and may be a useful marker for diagnosis between basal cell carcinoma (BCC) and trichoepithelioma. Trichoblastoma are benign neoplasms of follicular differentiation frequently found in nevus sebaceous. Many morphologic features are shared with nodular basal cell carcinoma, sometimes rendering a diagnosis difficult. Trichoblastoma and BCC show variable expression of Cytokeratin 15 and Cytokeratin 19, and absence

of hair keratins.

## **Application Notes**

Optimal dilution of the CK15 antibody should be determined by the researcher.

## **Immunogen**

Recombinant human KRT15 protein was used as the immunogen for the CK15 antibody.

## **Storage**

Store the CK15 antibody at 2-8oC (with azide) or aliquot and store at -20oC or colder (without azide).