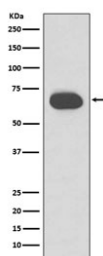


CK1 Antibody / Cytokeratin 1 / KRT1 [clone GBH-11] (RQ5047)

Catalog No.	Formulation	Size
RQ5047	Antibody in PBS with 0.02% sodium azide, 50% glycerol and 0.4-0.5mg/ml BSA	100 ul

[Bulk quote request](#)

Availability	1-2 weeks
Species Reactivity	Human
Format	Purified
Host	Rabbit
Clonality	Rabbit Monoclonal
Isotype	Rabbit IgG
Clone Name	GBH-11
Purity	Affinity purified
UniProt	P04264
Applications	Western Blot : 1:5000-1:20000
Limitations	This CK1 antibody is available for research use only.



Western blot testing of human skin lysate with CK1 antibody. Predicted molecular weight ~67 kDa.

Description

Cytokeratin 1 is a member of the keratin gene family. The type II cytokeratins consist of basic or neutral proteins which are arranged in pairs of heterotypic keratin chains coexpressed during differentiation of simple and stratified epithelial tissues. This type II cytokeratin is specifically expressed in the spinous and granular layers of the epidermis with family member KRT10 and mutations in these genes have been associated with bullous congenital ichthyosiform erythroderma. [RefSeq]

Application Notes

Optimal dilution of the CK1 antibody should be determined by the researcher.

Immunogen

A synthetic peptide specific to human Cytokeratin 1 / KRT1 was used as the immunogen for the CK1 antibody.

Storage

Store the CK1 antibody at -20oC.