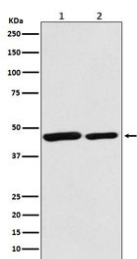


Citrate synthase Antibody / CS [clone ACAO-3] (RQ4777)

Catalog No.	Formulation	Size
RQ4777	Antibody in PBS with 0.02% sodium azide, 50% glycerol and 0.4-0.5mg/ml BSA	100 ul

Bulk quote request

Availability	1-2 weeks
Species Reactivity	Human, Mouse, Rat
Format	Purified
Clonality	Rabbit Monoclonal
Isotype	Rabbit IgG
Clone Name	ACAO-3
Purity	Affinity purified
UniProt	O75390
Applications	Western Blot : 1:500-1:2000
Limitations	This Citrate synthase antibody is available for research use only.



Western blot testing of 1) human HeLa and 2) mouse spleen lysate with Citrate synthase antibody. Predicted molecular weight: 46-52 kDa.

Description

Citrate synthase is a Krebs tricarboxylic acid cycle enzyme that catalyzes the synthesis of citrate from oxaloacetate and acetyl coenzyme A. The enzyme is found in nearly all cells capable of oxidative metabolism. This protein is nuclear encoded and transported into the mitochondrial matrix, where the mature form is found. [RefSeq]

Application Notes

Optimal dilution of the Citrate synthase antibody should be determined by the researcher.

Immunogen

A synthetic peptide specific to human Citrate synthase / CS was used as the immunogen for the Citrate synthase antibody.

Storage

Store the Citrate synthase antibody at -20oC.