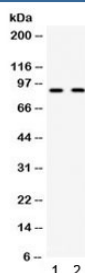


CIP2A Antibody / p90 Autoantigen (C-Terminal Region) (R32285)

Catalog No.	Formulation	Size
R32285	0.5mg/ml if reconstituted with 0.2ml sterile DI water	100 ug

Bulk quote request

Availability	1-3 business days
Species Reactivity	Human, Mouse
Format	Antigen affinity purified
Host	Rabbit
Clonality	Polyclonal (rabbit origin)
Isotype	Rabbit IgG
Purity	Antigen affinity
Buffer	Lyophilized from 1X PBS with 2.5% BSA and 0.025% sodium azide
UniProt	Q8TCG1
Applications	Western Blot : 0.1-0.5ug/ml
Limitations	This CIP2A antibody is available for research use only.



Western blot testing of 1) mouse testis and 2) human HeLa lysate with CIP2A antibody. Routinely observed at 90 kDa.

Description

Protein CIP2A, also known as 'cancerous inhibitor of PP2A' and p90, is a protein that in humans is encoded by the KIAA1524 gene. It is required for the malignant cellular growth and for in vivo tumor formation. In accordance with the oncogenic role of CIP2A, overexpression promotes Ras-elicited cell growth and transforms immortalized human cells (HEK-TERVs). More recently CIP2A has been shown to regulate phosphorylation and activity of many other oncoproteins and to drive malignant cell growth and tumorigenesis in various human cancer types. Importantly, CIP2A deficient mice are viable, suggesting that targeting of oncogenic function of CIP2A would not result in serious side-effects.

Application Notes

Optimal dilution of the CIP2A antibody should be determined by the researcher.

Immunogen

Amino acids EVQKAQLEGRLEEKESLVKLQQEELNKHSHMIAMIH of human KIAA1524 were used as the immunogen for the CIP2A antibody.

Storage

After reconstitution, the CIP2A antibody can be stored for up to one month at 4oC. For long-term, aliquot and store at -20oC. Avoid repeated freezing and thawing.

References (1)