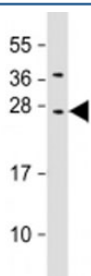


CIDE B Antibody / CIDEB (F53868)

Catalog No.	Formulation	Size
F53868-0.2ML	In 1X PBS, pH 7.4, with 0.09% sodium azide	0.2 ml
F53868-0.05ML	In 1X PBS, pH 7.4, with 0.09% sodium azide	0.05 ml

[Bulk quote request](#)

Availability	1-3 business days
Species Reactivity	Human
Format	Antigen affinity purified
Host	Rabbit
Clonality	Polyclonal (rabbit origin)
Isotype	Rabbit Ig
Purity	Antigen affinity
UniProt	Q9UHD4
Applications	Western Blot : 1:1000-2000
Limitations	This CIDE B antibody is available for research use only.



Western blot testing of human HepG2 cell lysate with CIDE B antibody at 1:2000.
Predicted molecular weight: 25 kDa.

Description

CIDE B is an activator of apoptosis.

Application Notes

Titration of the CIDE B antibody may be required due to differences in protocols and substrate sensitivity.

Immunogen

A portion of amino acids 150-183 from the human protein was used as the immunogen for the CIDE B antibody.

Storage

Aliquot the CIDE B antibody and store frozen at -20oC or colder. Avoid repeated freeze-thaw cycles.