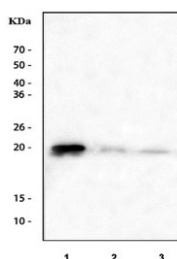


## CIB1 Antibody / Calcium and integrin-binding protein 1 (R32316)

Catalog No.	Formulation	Size
R32316	0.5mg/ml if reconstituted with 0.2ml sterile DI water	100 ug

**Bulk quote request**

<b>Availability</b>	1-3 business days
<b>Species Reactivity</b>	Human, Mouse, Rat
<b>Format</b>	Antigen affinity purified
<b>Clonality</b>	Polyclonal (rabbit origin)
<b>Isotype</b>	Rabbit IgG
<b>Purity</b>	Antigen affinity
<b>Buffer</b>	Lyophilized from 1X PBS with 2.5% BSA and 0.025% sodium azide
<b>UniProt</b>	Q99828
<b>Applications</b>	Western Blot : 0.5-1ug/ml
<b>Limitations</b>	This CIB1 antibody is available for research use only.



Western blot testing of 1) human A431, 2) rat PC-12 and 3) mouse brain tissue lysate with CIB1 antibody. Predicted molecular weight ~21 kDa.

### Description

Calcium and integrin-binding protein 1 is a protein that in humans is encoded by the CIB1 gene. This gene encodes a member of the EF-hand domain-containing calcium-binding superfamily. And this protein interacts with many other proteins, including the platelet integrin alpha-IIb-beta-3, DNA-dependent protein kinase, presenilin-2, focal adhesion kinase, p21 activated kinase, and protein kinase D. Moreover, the encoded protein may be involved in cell survival and proliferation, and is associated with several disease states including cancer and Alzheimer's disease. Alternative splicing results in multiple transcript variants.

### Application Notes

Optimal dilution of the CIB1 antibody should be determined by the researcher.

## **Immunogen**

Amino acids 6-191 of human CIB1 were used as the immunogen for the CIB1 antibody.

## **Storage**

After reconstitution, the CIB1 antibody can be stored for up to one month at 4°C. For long-term, aliquot and store at -20°C. Avoid repeated freezing and thawing.