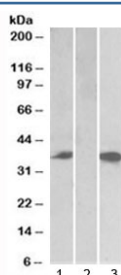


Chymase Antibody (R35267)

Catalog No.	Formulation	Size
R35267-100UG	0.5 mg/ml in 1X TBS, pH7.3, with 0.5% BSA (US sourced) and 0.02% sodium azide	100 ug

[Bulk quote request](#)

Availability	1-3 business days
Species Reactivity	Human
Format	Antigen affinity purified
Host	Goat
Clonality	Polyclonal (goat origin)
Isotype	Goat Ig
Purity	Antigen affinity
Gene ID	1215
Applications	Western Blot : 0.5-2ug/ml ELISA (peptide) LOD : 1:128000
Limitations	This Chymase antibody is available for research use only.



Western blot testing of HEK293 lysate overexpressing human Chymase-FLAG with Chymase antibody (0.1ug/ml) in Lane 1 and anti-FLAG (1/3000) in lane 3. Mock-transfected HEK293 probed with Chymase (0.5ug/ml) in Lane 2. Predicted molecular weight: ~35 kDa.

Description

Additional name(s) for this target protein: Chymase1, CMA1

Application Notes

Optimal dilution of the Chymase antibody should be determined by the researcher.

Immunogen

Amino acids QFRHPKYNTSTLHHD were used as the immunogen for this Chymase antibody.

Storage

Aliquot and store the Chymase antibody at -20oC.