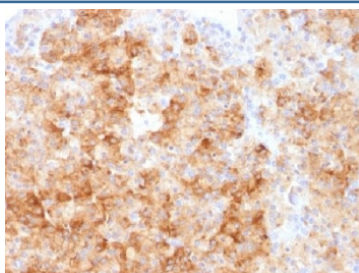


## Chromogranin A Antibody (V3273)

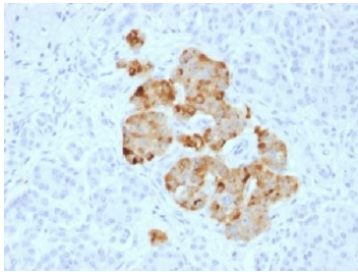
Catalog No.	Formulation	Size
V3273-100UG	0.2 mg/ml in 1X PBS with 0.1 mg/ml BSA (US sourced) and 0.05% sodium azide	100 ug
V3273-20UG	0.2 mg/ml in 1X PBS with 0.1 mg/ml BSA (US sourced) and 0.05% sodium azide	20 ug
V3273SAF-100UG	1 mg/ml in 1X PBS; BSA free, sodium azide free	100 ug

[Bulk quote request](#)

<b>Availability</b>	1-3 business days
<b>Species Reactivity</b>	Human
<b>Format</b>	Purified
<b>Host</b>	Rabbit
<b>Clonality</b>	Polyclonal (rabbit origin)
<b>Isotype</b>	Rabbit IgG
<b>Purity</b>	Protein A affinity chromatography
<b>UniProt</b>	P10645
<b>Localization</b>	Cytoplasmic
<b>Applications</b>	Immunohistochemistry (FFPE) : 0.25-0.5ug/ml for 30 min at RT
<b>Limitations</b>	This Chromogranin A antibody is available for research use only.



IHC analysis of FFPE human parathyroid gland stained with Chromogranin A antibody. Required HIER: steam sections in pH6 citrate buffer for 10-20 min.



IHC analysis of FFPE human pancreas stained with Chromogranin A antibody. Required HIER: steam sections in pH6 citrate buffer for 10-20 min.

## Description

Chromogranin A is present in neuroendocrine cells throughout the body, including the neuroendocrine cells of the large and small intestine, adrenal medulla and pancreatic islets. It is an excellent marker for carcinoid tumors, pheochromocytomas, paragangliomas, and other neuroendocrine tumors. Co-expression of Chromogranin A and neuron specific enolase (NSE) is common in neuroendocrine neoplasms. Reportedly, co-expression of certain keratins and chromogranin indicates neuroendocrine lineage. The presence of strong anti-chromogranin staining and absence of anti-keratin staining should raise the possibility of paraganglioma. The co-expression of chromogranin and NSE is typical of neuroendocrine neoplasms. Most pituitary adenomas and prolactinomas readily express chromogranin.

## Application Notes

Optimal dilution of the Chromogranin A antibody should be determined by the researcher.

## Immunogen

Recombinant human protein was used as the immunogen for the Chromogranin A antibody.

## Storage

Store the Chromogranin A antibody at 2-8oC (with azide) or aliquot and store at -20oC or colder (without azide).