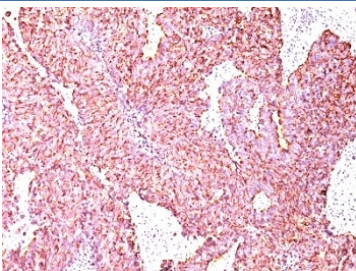


## Chromogranin A Antibody [clone SPM585] (V9009)

Catalog No.	Formulation	Size
V9009-100UG	0.2 mg/ml in 1X PBS with 0.1 mg/ml BSA (US sourced) and 0.05% sodium azide	100 ug
V9009-20UG	0.2 mg/ml in 1X PBS with 0.1 mg/ml BSA (US sourced) and 0.05% sodium azide	20 ug
V9009SAF-100UG	1 mg/ml in 1X PBS; BSA free, sodium azide free	100 ug
V9009IHC-7ML	Prediluted in 1X PBS with 0.1 mg/ml BSA (US sourced) and 0.05% sodium azide; *For IHC use only*	7 ml

[Bulk quote request](#)

<b>Availability</b>	1-3 business days
<b>Species Reactivity</b>	Human
<b>Format</b>	Purified
<b>Host</b>	Mouse
<b>Clonality</b>	Monoclonal (mouse origin)
<b>Isotype</b>	Mouse IgG1, kappa
<b>Clone Name</b>	SPM585
<b>Purity</b>	Protein G affinity chromatography
<b>UniProt</b>	P10645
<b>Localization</b>	Finely granular cytoplasmic
<b>Applications</b>	Immunohistochemistry (FFPE) : 1-2ug/ml for 30 min at RT
<b>Limitations</b>	This Chromogranin A antibody is available for research use only.



Chromogranin A antibody human small cell lung carcinoma IHC. Immunohistochemistry staining of formalin-fixed, paraffin-embedded human small cell lung carcinoma with Chromogranin A antibody (clone SPM585).

## Description

Chromogranin A is present in neuroendocrine cells throughout the body, including the neuroendocrine cells of the large and small intestine, adrenal medulla and pancreatic islets. It is an excellent marker for carcinoid tumors, pheochromocytomas, paragangliomas, and other neuroendocrine tumors. Co-expression of chromogranin A and neuron specific enolase (NSE) is common in neuroendocrine neoplasms. Reportedly, co-expression of certain keratins and chromogranin indicates neuroendocrine lineage. The presence of strong anti-chromogranin staining and absence of anti-keratin staining should raise the possibility of paraganglioma. The co-expression of chromogranin and NSE is typical of neuroendocrine neoplasms. Most pituitary adenomas and prolactinomas readily express chromogranin.

This Chromogranin A antibody is part of a [broader CHGA antibody panel](#) offered by NSJ Bioreagents.

## Application Notes

The optimal dilution of the Chromogranin A antibody for each application should be determined by the researcher.

1. Staining of formalin-fixed tissues requires boiling tissue sections in pH 9 10mM Tris with 1mM EDTA for 10-20 min followed by cooling at RT for 20 minutes.
2. The prediluted format is supplied in a dropper bottle and is optimized for use in IHC. After epitope retrieval step (if required), drip mAb solution onto the tissue section and incubate at RT for 30 min.

## Immunogen

Human pheochromocytoma cells were used as the immunogen for this Chromogranin A antibody.

## Storage

Store the Chromogranin A antibody at 2-8oC (with azide) or aliquot and store at -20oC or colder (without azide).