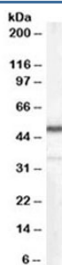


## Chromogranin A Antibody (R35268)

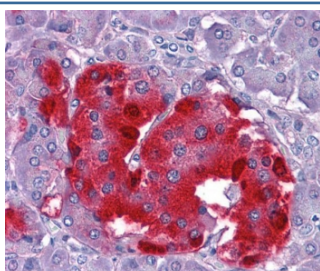
Catalog No.	Formulation	Size
R35268-100UG	0.5 mg/ml in 1X TBS, pH7.3, with 0.5% BSA (US sourced) and 0.02% sodium azide	100 ug

[Bulk quote request](#)

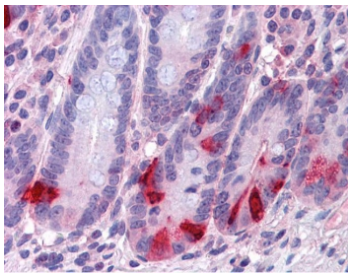
Availability	1-3 business days
Species Reactivity	Human
Format	Antigen affinity purified
Clonality	Polyclonal (goat origin)
Isotype	Goat Ig
Purity	Antigen affinity
Gene ID	1113
Localization	Cytoplasmic
Applications	Western Blot : 0.1-0.3ug/ml IHC (FFPE) : 3.75ug/ml ELISA (peptide) LOD : 1:4000
Limitations	This Chromogranin A antibody is available for research use only.



Western blot testing of human kidney lysate with Chromogranin A antibody at 0.1ug/ml. Predicted molecular weight ~50 kDa.



IHC testing of FFPE human pancreas tissue with Chromogranin A antibody at 3.75ug/ml. Required HIER: steamed antigen retrieval with pH6 citrate buffer; AP-staining.



IHC testing of FFPE human small intestine tissue with Chromogranin A antibody at 3.75ug/ml. Required HIER: steamed antigen retrieval with pH6 citrate buffer; AP-staining.

## Description

Additional name(s) for this target protein: CHGA, parathyroid secretory protein 1, Vasostatin, Pancreastatin, Parastatin

## Application Notes

Optimal dilution of the Chromogranin A antibody should be determined by the researcher.

## Immunogen

Amino acids QGAKERAHQQKKH were used as the immunogen for this Chromogranin A antibody.

## Storage

Aliquot and store the Chromogranin A antibody at -20oC.