

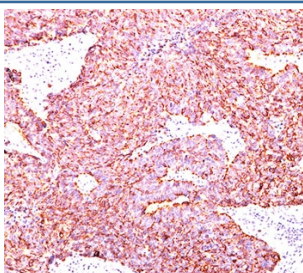
Chromogranin A Antibody [clone PHE5] (V2096)

Catalog No.	Formulation	Size
V2096-100UG	0.2 mg/ml in 1X PBS with 0.1 mg/ml BSA (US sourced) and 0.05% sodium azide	100 ug
V2096-20UG	0.2 mg/ml in 1X PBS with 0.1 mg/ml BSA (US sourced) and 0.05% sodium azide	20 ug
V2096SAF-100UG	1 mg/ml in 1X PBS; BSA free, sodium azide free	100 ug
V2096IHC-7ML	Prediluted in 1X PBS with 0.1 mg/ml BSA (US sourced) and 0.05% sodium azide; *For IHC use only*	7 ml

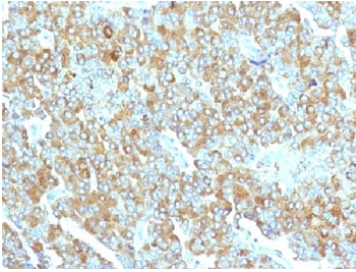
 Citations (6)

[Bulk quote request](#)

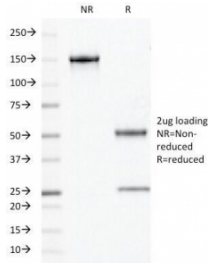
Species Reactivity	Human
Format	Purified
Host	Mouse
Clonality	Monoclonal (mouse origin)
Isotype	Mouse IgG1, kappa
Clone Name	PHE5
Purity	Protein G affinity chromatography
Gene ID	1113
Localization	Finely granular cytoplasmic
Applications	Flow Cytometry : 1-2ug/10 ⁶ cells Immunofluorescence : 1-2ug/ml Immunohistochemistry (FFPE) : 1-2ug/ml for 30 min at RT (1) (2)
Limitations	This antibody is available for research use only.



IHC testing of human small cell lung carcinoma stained with Chromogranin A antibody.



Chromogranin A Antibody Adrenal Gland IHC. Immunohistochemistry testing of FFPE human adrenal gland with Chromogranin A antibody



SDS-PAGE Analysis of Purified, BSA-Free Chromogranin A Antibody (clone PHE5). Confirmation of Integrity and Purity of the Antibody.

Description

Chromogranin A is present in neuroendocrine cells throughout the body, including the neuroendocrine cells of the large and small intestine, adrenal medulla and pancreatic islets. It is an excellent marker for carcinoid tumors, pheochromocytomas, paragangliomas, and other neuroendocrine tumors. Co-expression of chromogranin A and neuron specific enolase (NSE) is common in neuroendocrine neoplasms. Reportedly, co-expression of certain keratins and chromogranin indicates neuroendocrine lineage. The presence of strong anti-chromogranin staining and absence of anti-keratin staining should raise the possibility of paraganglioma. The co-expression of chromogranin and NSE is typical of neuroendocrine neoplasms. Most pituitary adenomas and prolactinomas readily express chromogranin.

This CHGA antibody is part of a [broader Chromogranin A antibody panel](#) offered by NSJ Bioreagents.

Application Notes

The concentration stated for each application is a general starting point. Variations in protocols, secondaries and substrates may require the antibody to be titrated up or down for optimal performance.

1. Staining of FFPE tissues requires boiling tissue sections in pH 9 10mM Tris with 1mM EDTA for 10-20 min followed by cooling at RT for 20 min.
2. The prediluted format is supplied in a dropper bottle and is optimized for use in IHC. After epitope retrieval step (if required), drip mAb solution onto the tissue section and incubate at RT for 30 min.

Immunogen

Human pheochromocytoma cells were used as the immunogen for this Chromogranin A antibody PHE5.

Storage

Store the Chromogranin A antibody at 2-8°C (with azide) or aliquot and store at -20°C or colder (without azide).

Alternate Names

Beta-Granin; CGA; CHGA; Chromogranin A Parathyroid Secretory Protein 1; ER-37; Pancreastatin; Parastatin; Parathyroid Secretory Protein 1; Pituitary Secretory Protein I; SP-I; Vasostatin I or II, Chromogranin A antibody

References (2)