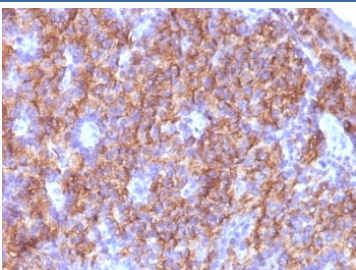


## Chromogranin A Antibody Cocktail [clone CGA/413 + CHGA/777 + CHGA/798] (V2455)

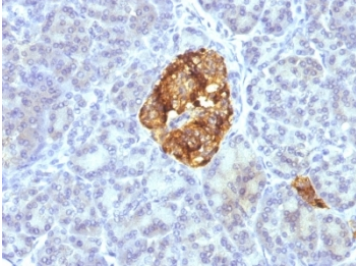
Catalog No.	Formulation	Size
V2455-100UG	0.2 mg/ml in 1X PBS with 0.1 mg/ml BSA (US sourced) and 0.05% sodium azide	100 ug
V2455-20UG	0.2 mg/ml in 1X PBS with 0.1 mg/ml BSA (US sourced) and 0.05% sodium azide	20 ug
V2455SAF-100UG	1 mg/ml in 1X PBS; BSA free, sodium azide free	100 ug
V2455IHC-7ML	Prediluted in 1X PBS with 0.1 mg/ml BSA (US sourced) and 0.05% sodium azide; *For IHC use only*	7 ml

### Bulk quote request

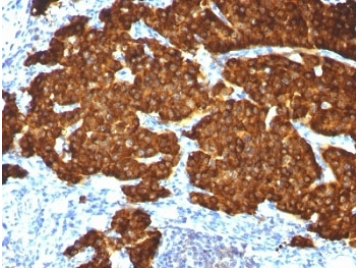
<b>Availability</b>	1-3 business days
<b>Species Reactivity</b>	Human, Mouse, Rat
<b>Format</b>	Purified
<b>Host</b>	Mouse
<b>Clonality</b>	Monoclonal (mouse origin)
<b>Isotype</b>	Mouse IgG2b, kappa + Mouse IgG1, kappa
<b>Clone Name</b>	CGA/413 + CHGA/777 + CHGA/798
<b>Purity</b>	Protein G affinity chromatography
<b>UniProt</b>	P10645
<b>Localization</b>	Finely granular cytoplasmic
<b>Applications</b>	Immunohistochemistry (FFPE) : 1-2ug/ml for 30 min at RT
<b>Limitations</b>	This Chromogranin A antibody cocktail is available for research use only.



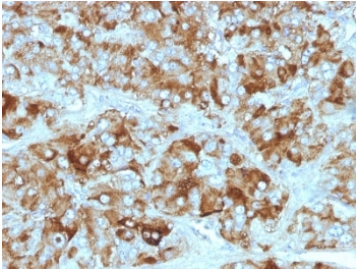
IHC: Formalin-fixed, paraffin-embedded parathyroid stained with Chromogranin A antibody (CGA/413 + CHGA/777 + CHGA/798)



IHC: Formalin-fixed, paraffin-embedded pancreas stained with Chromogranin A antibody cocktail



IHC: Formalin-fixed, paraffin-embedded pheochromocytoma stained with Chromogranin A antibody cocktail



IHC: Formalin-fixed, paraffin-embedded adrenal gland stained with Chromogranin A antibody cocktail

## Description

Chromogranin A is present in neuroendocrine cells throughout the body, including the neuroendocrine cells of the large and small intestine, adrenal medulla and pancreatic islets. It is an excellent marker for carcinoid tumors, pheochromocytomas, paragangliomas, and other neuroendocrine tumors. Co-expression of chromogranin A and neuron specific enolase (NSE) is common in neuroendocrine neoplasms. Reportedly, co-expression of certain keratins and chromogranin indicates neuroendocrine lineage. The presence of strong anti-chromogranin staining and absence of anti-keratin staining should raise the possibility of paraganglioma. The co-expression of chromogranin and NSE is typical of neuroendocrine neoplasms. Most pituitary adenomas and prolactinomas readily express chromogranin.

For a well-established Chromogranin A antibody widely used for consistent detection of CHGA in neuroendocrine tissues, see our [Chromogranin A Antibody / Clone LK2H10](#).

## Application Notes

Optimal dilution of the Chromogranin A antibody cocktail should be determined by the researcher.

1. Staining of formalin-fixed tissues requires boiling tissue sections in 10mM Citrate buffer, pH 6.0, for 10-20 min followed by cooling at RT for 20 minutes
2. The prediluted format is supplied in a dropper bottle and is optimized for use in IHC. After epitope retrieval step (if required), drip mAb solution onto the tissue section and incubate at RT for 30 min.

## Immunogen

Recombinant human protein was used as the immunogen for the Chromogranin A antibody cocktail.

## Storage

Store the Chromogranin A antibody cocktail at 2-8°C (with azide) or aliquot and store at -20°C or colder (without azide).