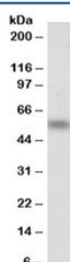


CHRNE Antibody (R33589)

Catalog No.	Formulation	Size
R33589-100UG	0.5 mg/ml in 1X TBS, pH7.3, with 0.5% BSA (US sourced) and 0.02% sodium azide	100 ug

[Bulk quote request](#)

Availability	1-3 business days
Species Reactivity	Human, Mouse, Rat
Format	Antigen affinity purified
Host	Goat
Clonality	Polyclonal (goat origin)
Isotype	Goat Ig
Purity	Antigen affinity
Gene ID	1145
Applications	Western Blot : 1-3ug/ml ELISA (peptide) LOD : 1:1000
Limitations	This CHRNE antibody is available for research use only.



Western blot testing of mouse fetal skeletal muscle lysate with CHRNE antibody at 1ug/ml. Predicted molecular weight: ~55kDa.

Description

Additional name(s) for this target protein: Cholinergic receptor, nicotinic, epsilon

Application Notes

Optimal dilution of the CHRNE antibody should be determined by the researcher.

Immunogen

Amino acids DQEATGEEVSD were used as the immunogen for this CHRNE antibody.

Storage

Aliquot and store the CHRNE antibody at -20oC.