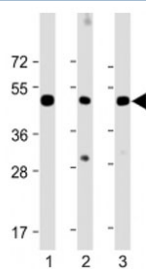


CHRNE Antibody / Acetylcholine receptor subunit epsilon (Center Region) (F54111)

Catalog No.	Formulation	Size
F54111-0.2ML	In 1X PBS, pH 7.4, with 0.09% sodium azide	0.2 ml
F54111-0.05ML	In 1X PBS, pH 7.4, with 0.09% sodium azide	0.05 ml

[Bulk quote request](#)

Availability	1-3 business days
Species Reactivity	Human, Mouse, Rat
Format	Antigen affinity purified
Host	Rabbit
Clonality	Polyclonal (rabbit origin)
Isotype	Rabbit Ig
Purity	Antigen affinity
UniProt	Q04844
Applications	Western Blot : 1:2000
Limitations	This CHRNE antibody is available for research use only.



Western blot testing of CHRNE antibody at 1:2000: Lane 1) human skeletal muscle, 2) mouse skeletal muscle and 3) rat skeletal muscle lysate. Predicted molecular weight ~55 kDa.

Description

After binding acetylcholine, the AChR responds by an extensive change in conformation that affects all subunits and leads to opening of an ion-conducting channel across the plasma membrane. [UniProt]

Application Notes

The stated application concentrations are suggested starting points. Titration of the CHRNE antibody may be required due to differences in protocols and secondary/substrate sensitivity.

Immunogen

A portion of amino acids 409-443 from human Acetylcholine receptor subunit epsilon was used as the immunogen for the CHRNE antibody.

Storage

Aliquot the CHRNE antibody and store frozen at -20oC or colder. Avoid repeated freeze-thaw cycles.