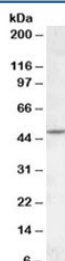


CHRNA2 Antibody (R35399)

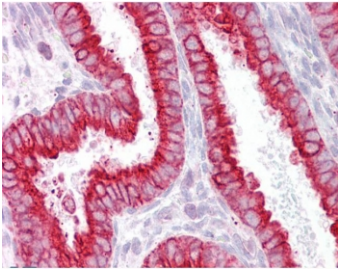
Catalog No.	Formulation	Size
R35399-100UG	0.5 mg/ml in 1X TBS, pH7.3, with 0.5% BSA (US sourced) and 0.02% sodium azide	100 ug

[Bulk quote request](#)

Availability	1-3 business days
Species Reactivity	Human
Predicted Reactivity	Mouse, Rat, Dog, Pig, Cow
Format	Antigen affinity purified
Host	Goat
Clonality	Polyclonal (goat origin)
Isotype	Goat Ig
Purity	Antigen affinity
Gene ID	1141
Applications	Western Blot : 1-3ug/ml IHC (FFPE) : 2.5ug/ml ELISA (peptide) LOD : 1:64000
Limitations	This CHRNA2 antibody is available for research use only.



Western blot testing of human cerebellum lysate with CHRNA2 antibody at 1ug/ml.
Predicted molecular weight: ~57 kDa but can be observed at ~50 kDa.



IHC testing of FFPE human uterus tissue with CHRNB2 antibody at 2.5ug/ml. Required HIER: steamed antigen retrieval with pH6 citrate buffer; AP-staining.

Description

Additional name(s) for this target protein: Cholinergic receptor nicotinic beta 2

Application Notes

Optimal dilution of the CHRNB2 antibody should be determined by the researcher.

Immunogen

Amino acids QPRHHCARQRLR were used as the immunogen for this CHRNB2 antibody.

Storage

Aliquot and store the CHRNB2 antibody at -20oC.