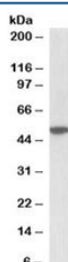


## CHRM2 Antibody (R35375)

Catalog No.	Formulation	Size
R35375-100UG	0.5 mg/ml in 1X TBS, pH7.3, with 0.5% BSA (US sourced) and 0.02% sodium azide	100 ug

[Bulk quote request](#)

Availability	1-3 business days
Species Reactivity	Human, Mouse
Predicted Reactivity	Cow, Dog, Pig
Format	Antigen affinity purified
Clonality	Polyclonal (goat origin)
Isotype	Goat Ig
Purity	Antigen affinity
Gene ID	1129
Applications	Western Blot : 0.5-2ug/ml ELISA (peptide) LOD : 1:128000
Limitations	This CHRM2 antibody is available for research use only.



Western blot testing of mouse brain lysate with CHRM2 antibody at 2ug/ml.  
Predicted/observed molecular weight: ~51kDa.

## Description

Additional name(s) for this target protein: Cholinergic receptor muscarinic 2

## Application Notes

Optimal dilution of the CHRM2 antibody should be determined by the researcher.

## Immunogen

Amino acids QNGDEKQNVARK were used as the immunogen for this CHRM2 antibody.

## **Storage**

Aliquot and store the CHRM2 antibody at -20oC.