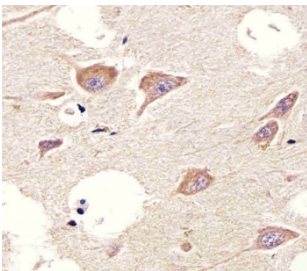


## CHRM2 Antibody [clone 1424CT461.78.60] (F54335)

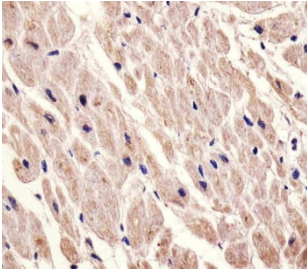
Catalog No.	Formulation	Size
F54335-0.4ML	In 1X PBS, pH 7.4, with 0.09% sodium azide	0.4 ml
F54335-0.08ML	In 1X PBS, pH 7.4, with 0.09% sodium azide	0.08 ml

[Bulk quote request](#)

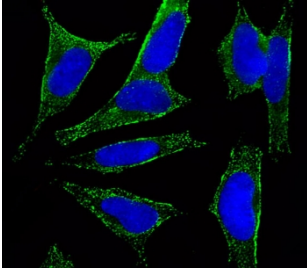
<b>Availability</b>	1-3 business days
<b>Species Reactivity</b>	Human, Mouse
<b>Format</b>	Purified
<b>Host</b>	Mouse
<b>Clonality</b>	Monoclonal (mouse origin)
<b>Isotype</b>	Mouse IgG1, kappa
<b>Clone Name</b>	1424CT461.78.60
<b>Purity</b>	Protein G affinity
<b>UniProt</b>	P08172
<b>Applications</b>	Immunohistochemistry (FFPE) : 1:25 Western Blot : 1:500-1:2000 Immunofluorescence : 1:25 Flow Cytometry : 1:25 (1x10e6 cells)
<b>Limitations</b>	This CHRM2 antibody is available for research use only.



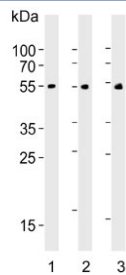
IHC testing of FFPE human brain tissue with CHRM2 antibody. HIER: steam section in pH6 citrate buffer for 20 min and allow to cool prior to staining.



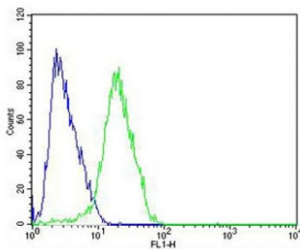
IHC testing of FFPE human heart tissue with CHR2 antibody. HIER: steam section in pH6 citrate buffer for 20 min and allow to cool prior to staining.



Immunofluorescent staining of fixed and permeabilized human SH-SY5Y cells with CHR2 antibody (green) and DAPI nuclear stain (blue).



Western blot testing of 1) human SH-SY5Y, 2) human brain and 3) mouse brain lysate with CHR2 antibody. Predicted molecular weight ~52 kDa.



Flow cytometry testing of fixed and permeabilized human SH-SY5Y cells with CHR2 antibody; Blue=isotype control, Green= CHR2 antibody.

## Description

The muscarinic acetylcholine receptor mediates various cellular responses, including inhibition of adenylate cyclase, breakdown of phosphoinositides and modulation of potassium channels through the action of G proteins. Primary transducing effect is adenylate cyclase inhibition.

## Application Notes

The stated application concentrations are suggested starting points. Titration of the CHR2 antibody may be required due to differences in protocols and secondary/substrate sensitivity.

## Immunogen

A recombinant human protein was used as the immunogen for the CHR2 antibody.

## Storage

Aliquot the CHR2 antibody and store frozen at -20oC or colder. Avoid repeated freeze-thaw cycles.

