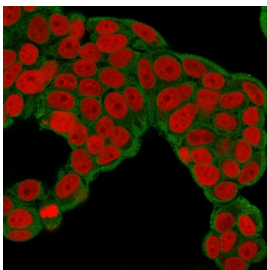


CHP2 Antibody / Calcineurin B homologous protein 2 [clone CPTC-CHP2-1] (V8074)

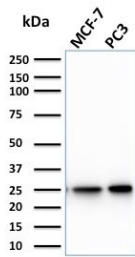
Catalog No.	Formulation	Size
V8074-100UG	0.2 mg/ml in 1X PBS with 0.1 mg/ml BSA (US sourced) and 0.05% sodium azide	100 ug
V8074-20UG	0.2 mg/ml in 1X PBS with 0.1 mg/ml BSA (US sourced) and 0.05% sodium azide	20 ug
V8074SAF-100UG	1 mg/ml in 1X PBS; BSA free, sodium azide free	100 ug

Bulk quote request

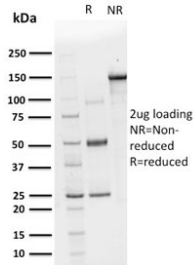
Availability	1-3 business days
Species Reactivity	Human
Format	Purified
Host	Mouse
Clonality	Monoclonal (mouse origin)
Isotype	Mouse IgG2c, kappa
Clone Name	CPTC-CHP2-1
Purity	Protein G affinity chromatography
UniProt	O43745
Localization	Nuclear, cytoplasmic
Applications	Western Blot : 1-2ug/ml Immunofluorescence : 1-2ug/ml
Limitations	This CHP2 antibody is available for research use only.



Immunofluorescent staining of permeabilized human MCF7 cells with CHP2 antibody (green) and Reddot nuclear stain (red).



Western blot testing of human MCF7 and PC3 cell lysate with CHP2 antibody. Predicted molecular weight ~22 kDa.



SDS-PAGE analysis of purified, BSA-free CHP2 antibody as confirmation of integrity and purity.

Description

CHP2 (calcineurin B homologous protein 2), also known as hepatocellular carcinoma-associated antigen 520, is a 196 amino acid protein that contains 4 EF-hand domains and plays a potential role in transmembrane Na⁺/H⁺ exchange. By binding to and activating NHE-1, CHP2 increases the pH and works to protect cells from serum deprivation-induced death. Though not typically detected in normal tissues, CHP2 is highly expressed in malignantly transformed cells and is therefore considered to be a tumor-associated antigen. Ectopic expression of CHP2 promotes proliferation of HEK293 cells and knockdown of CHP2 mRNA in HepG2 cells inhibits cell proliferation. Like calcineurin B, CHP2 can bind to and stimulate phosphatase activity of calcineurin A and activate the calcineurin/NFAT signaling pathway.

Application Notes

Optimal dilution of the CHP2 antibody should be determined by the researcher.

Immunogen

Recombinant human full-length protein was used as the immunogen for the CHP2 antibody.

Storage

Store the CHP2 antibody at 2-8°C (with azide) or aliquot and store at -20°C or colder (without azide).