

## Choriogonadotropin beta Antibody / HCG-beta (F55073)

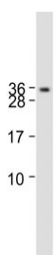
Catalog No.	Formulation	Size
F55073-0.2ML	In 1X PBS, pH 7.4, with 0.09% sodium azide	0.2 ml
F55073-0.05ML	In 1X PBS, pH 7.4, with 0.09% sodium azide	0.05 ml

[Bulk quote request](#)

<b>Availability</b>	1-2 business days
<b>Species Reactivity</b>	Human
<b>Format</b>	Antigen affinity purified
<b>Clonality</b>	Polyclonal (rabbit origin)
<b>Isotype</b>	Rabbit Ig
<b>UniProt</b>	P0DN86
<b>Localization</b>	Cytoplasmic, Secreted
<b>Applications</b>	Western Blot : 1:500-1:1000 Immunohistochemistry (FFPE) : 1:10-1:50
<b>Limitations</b>	This Choriogonadotropin beta antibody is available for research use only.



Western blot testing of human placental tissue lysate with Choriogonadotropin beta antibody. Predicted molecular weight ~18 kDa (Choriogonadotropin beta subunit) and ~40 kDa (Choriogonadotropin).



Western blot testing of human Ramos cell lysate with Choriogonadotropin beta antibody. Predicted molecular weight ~18 kDa (Choriogonadotropin beta subunit) and ~40 kDa (Choriogonadotropin).



IHC staining of FFPE human placental tissue with Choriogonadotropin beta antibody.  
HIER: steam section in pH6 citrate buffer for 20 min and allow to cool prior to staining.

## Description

Choriogonadotropin beta, also known as beta-hCG, is a hormone produced by the placenta during pregnancy. It plays a key role in maintaining the pregnancy and supporting the development of the fetus. Beta-hCG levels can be detected in a woman's blood or urine as early as 11 days after conception, making it a valuable marker for pregnancy testing. It also has other important functions, such as stimulating the production of progesterone, a hormone that helps maintain the uterine lining and support the developing fetus. In addition, beta-hCG also plays a role in preventing the breakdown of the corpus luteum, a temporary endocrine structure that produces progesterone during early pregnancy.

## Application Notes

Titration of the Choriogonadotropin beta antibody may be required due to differences in protocols and secondary/substrate sensitivity.

## Immunogen

A portion of amino acids 137-165 from the human protein was used as the immunogen for this Choriogonadotropin beta antibody.

## Storage

Aliquot the Choriogonadotropin beta antibody and store frozen at -20oC or colder. Avoid repeated freeze-thaw cycles.