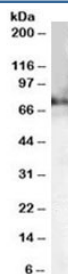


## Choline acetyltransferase Antibody (R34413)

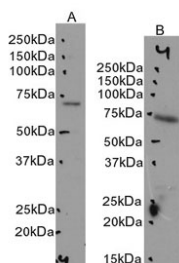
Catalog No.	Formulation	Size
R34413-100UG	0.5 mg/ml in 1X TBS, pH7.3, with 0.5% BSA (US sourced) and 0.02% sodium azide	100 ug

[Bulk quote request](#)

Availability	1-3 business days
Species Reactivity	Mouse
Predicted Reactivity	Rat
Format	Antigen affinity purified
Host	Goat
Clonality	Polyclonal (goat origin)
Isotype	Goat Ig
Purity	Antigen affinity
Gene ID	12647
Applications	Western Blot : 0.1-0.3ug/ml ELISA (peptide) LOD : 1:128000
Limitations	This Choline acetyltransferase antibody is available for research use only.



Western blot testing of mouse brain lysate with Choline acetyltransferase antibody at 0.2ug/ml. Predicted molecular weight ~74 kDa.



Western blot testing of A) mouse brain and B) mouse testis lysate with Choline acetyltransferase antibody at 0.1ug/ml. Predicted molecular weight ~74 kDa.

## Description

Additional name(s) for this target protein: ChAT

## Application Notes

Optimal dilution of the Choline acetyltransferase antibody should be determined by the researcher.

1. Not suitable for human sample testing

## Immunogen

Amino acids KERARGPTKPSNLD were used as the immunogen for this Choline acetyltransferase antibody.

## Storage

Aliquot and store the Choline acetyltransferase antibody at -20oC.